

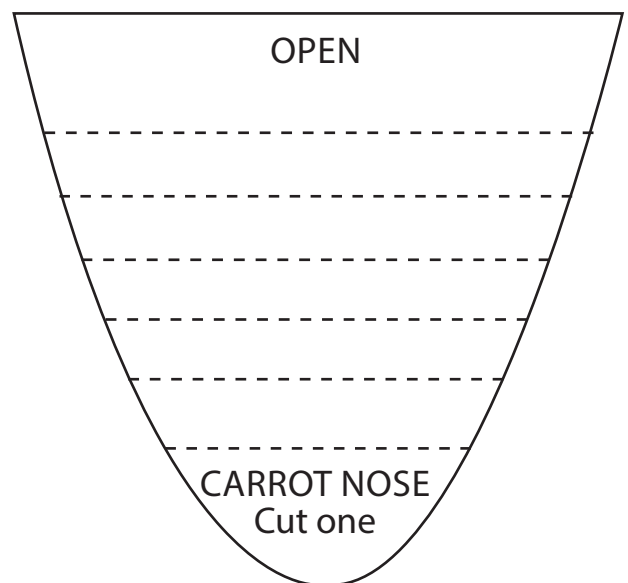
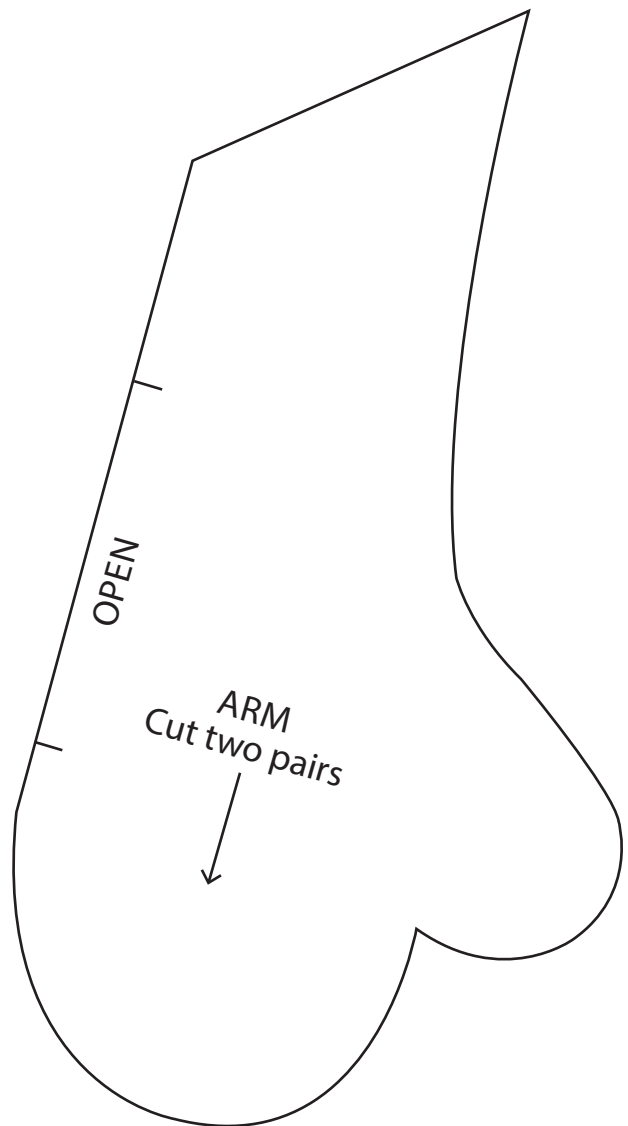
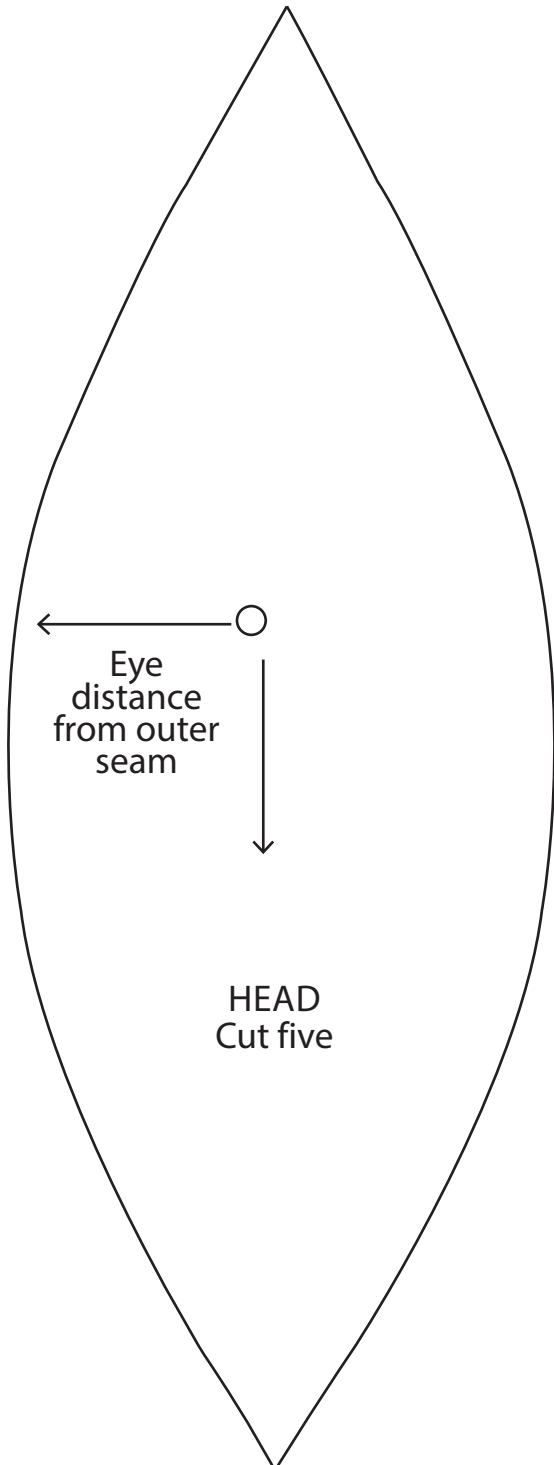
TEMPLATES

Here are the full-size templates for the projects in issue 128

SNOWMAN TOY

PAGE 57

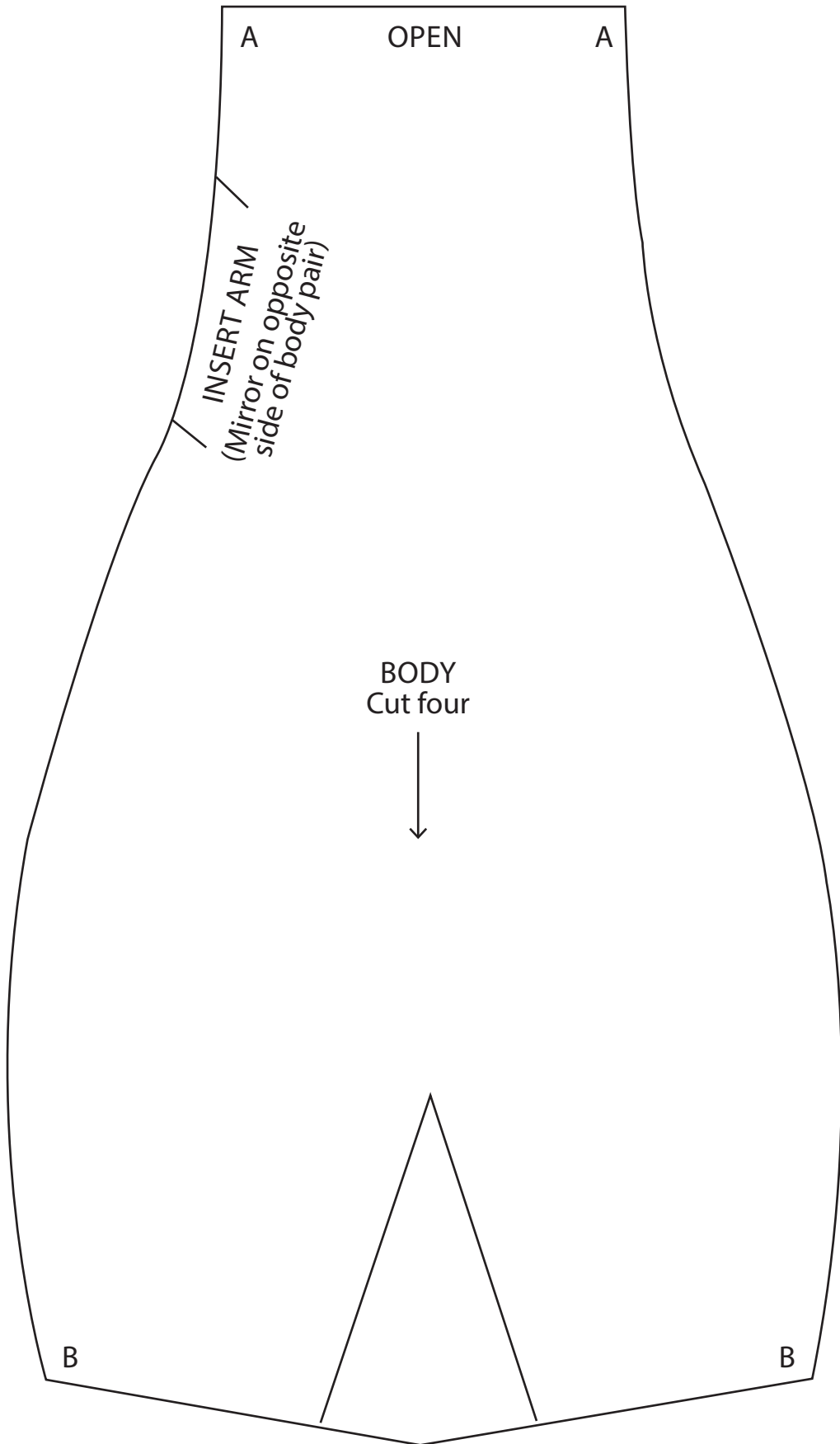
ACTUAL SIZE



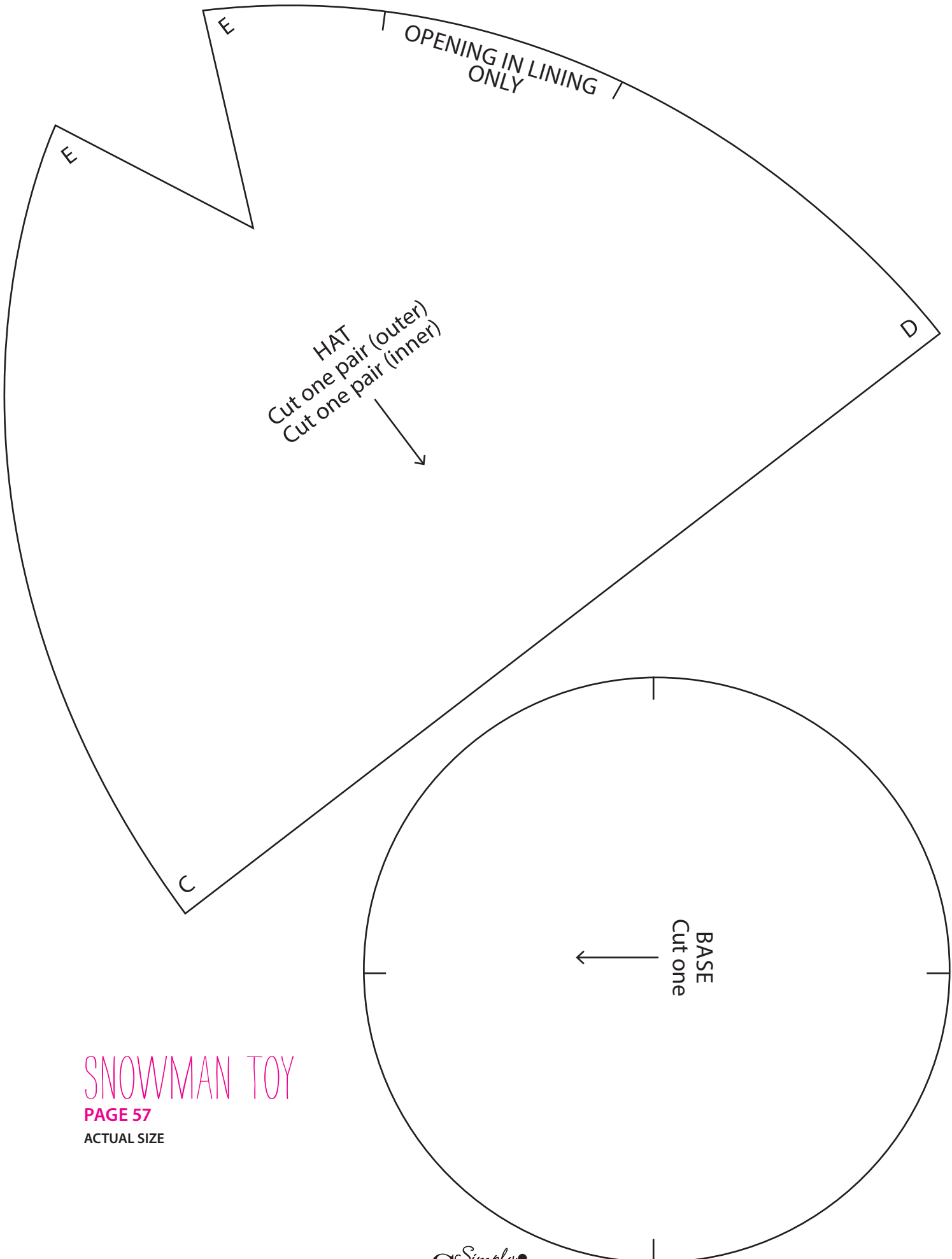
SNOWMAN TOY

PAGE 57

ACTUAL SIZE



— — — — —
TEMPLATES
— — — — —



SNOWMAN TOY

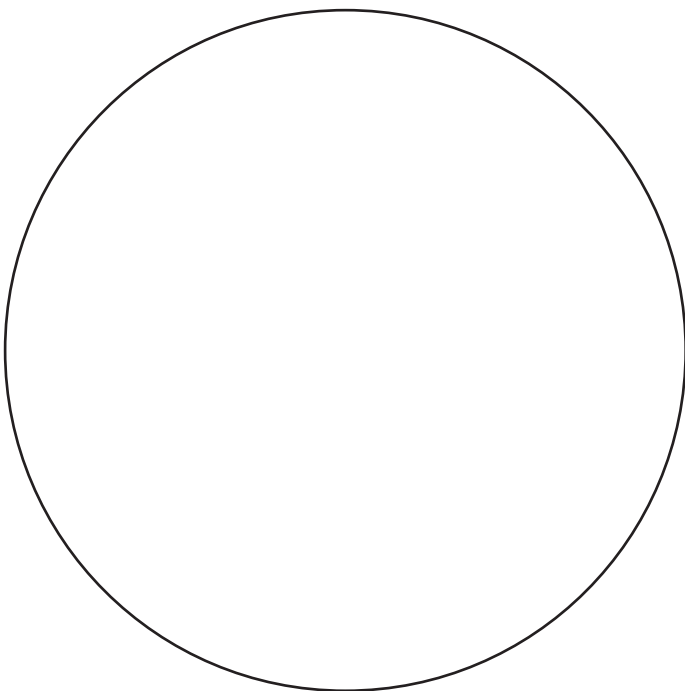
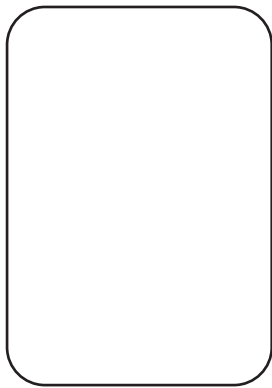
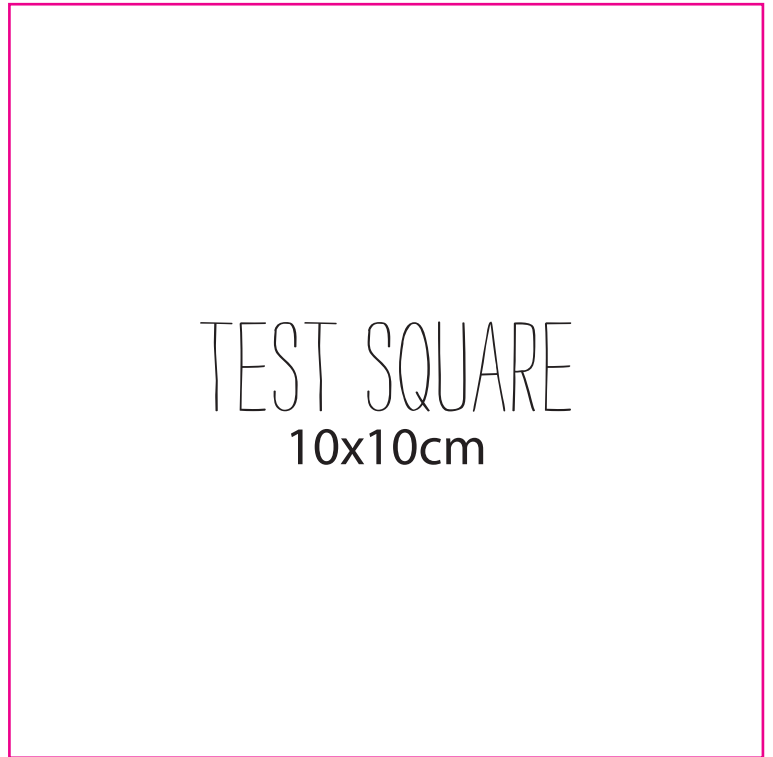
PAGE 57

ACTUAL SIZE

FABRIC ORNAMENTS

PAGE 61

ACTUAL SIZE

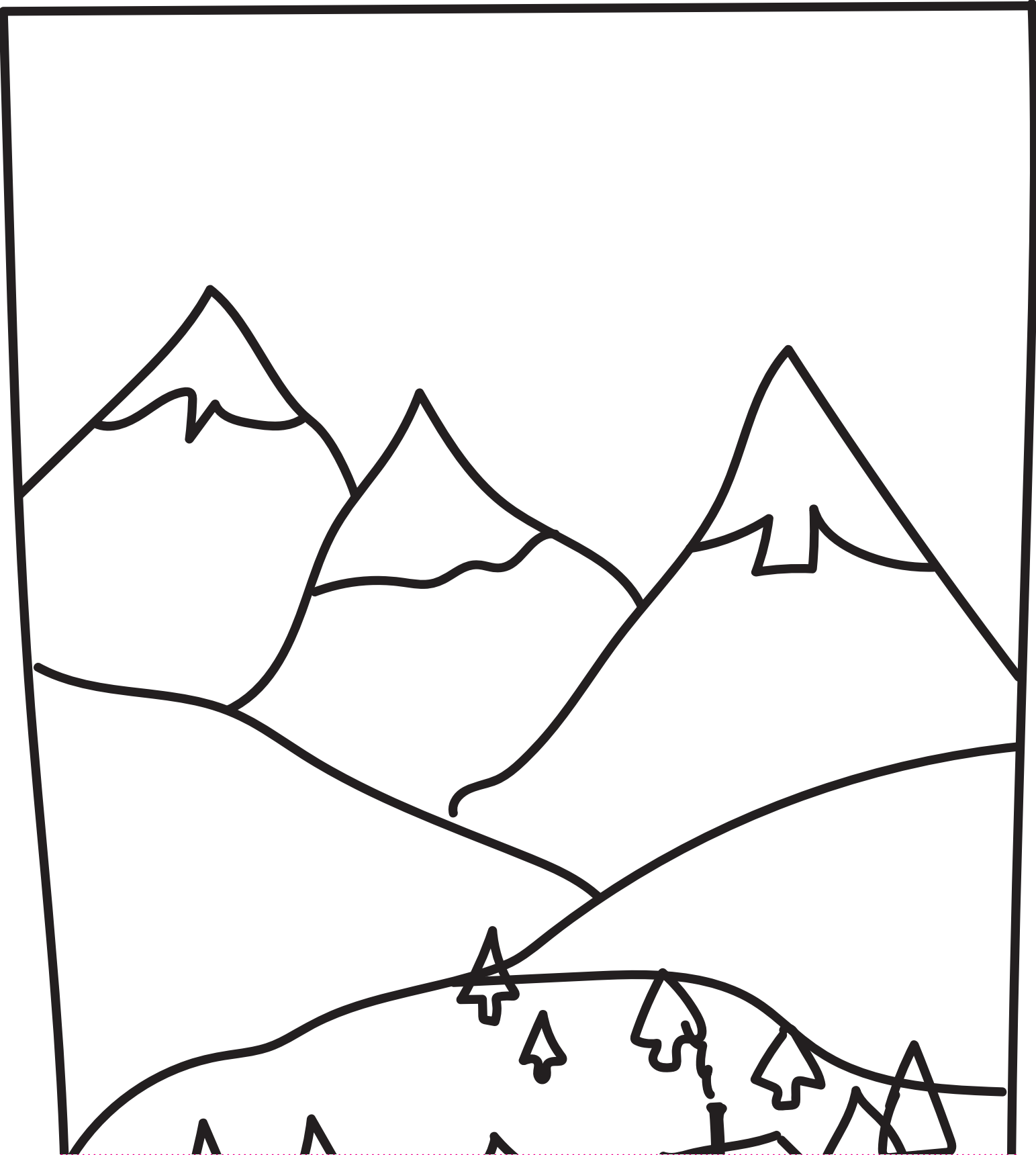


FELT STOCKING

PAGE 53

ACTUAL SIZE

ATTACH PART A TO PART B



ATTACH PART B HERE

FELT STOCKING

PAGE 53

ACTUAL SIZE

ATTACH PART B TO PART A AND C

ATTACH PART A HERE



ATTACH PART C HERE

FELT STOCKING

PAGE 53

ACTUAL SIZE

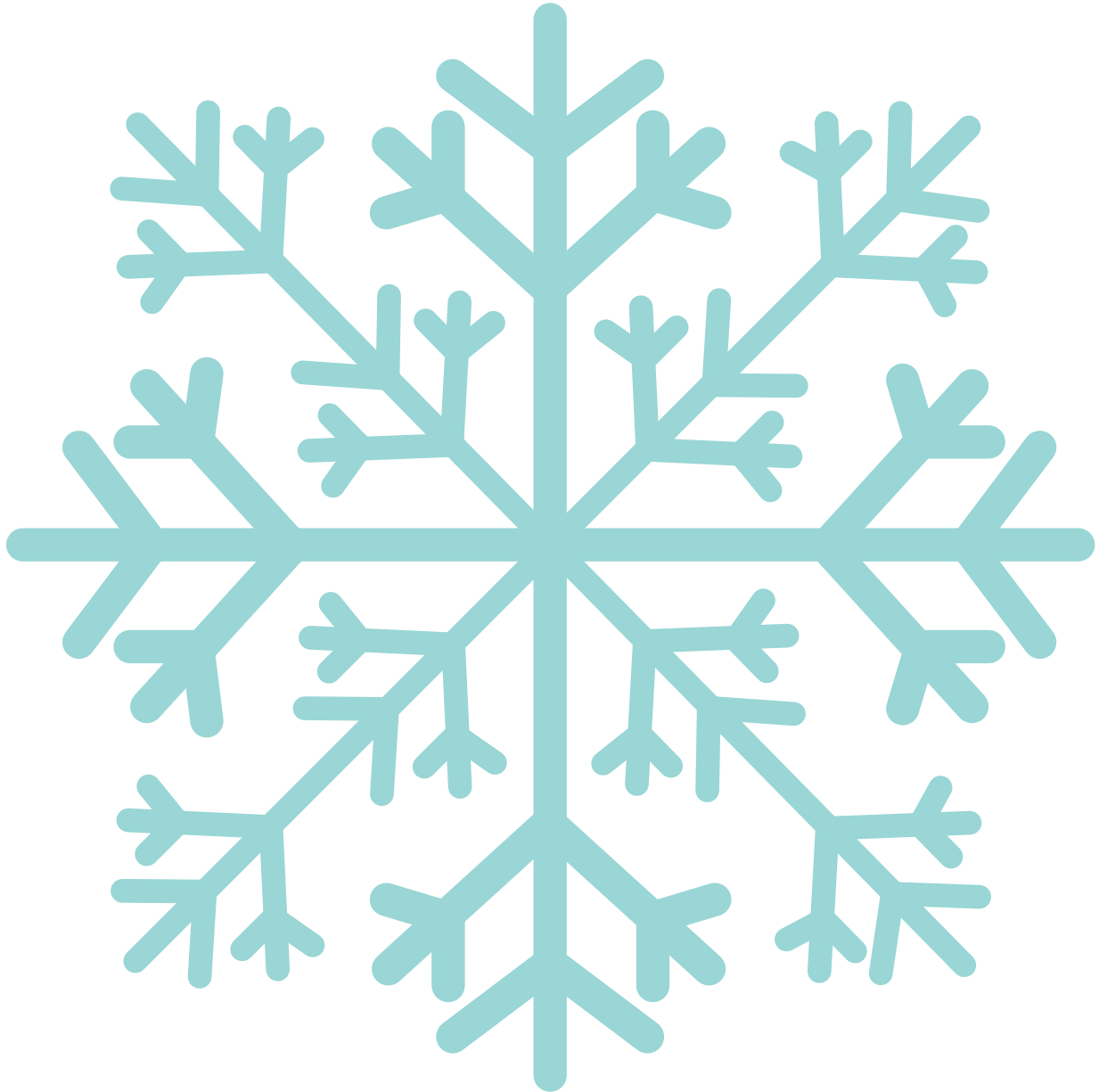
ATTACH PART C TO PART B



CHRISTMAS JUMPERS

PAGE 18
ACTUAL SIZE

All templates are available to download from gathered.how. Scan the code to go straight to the SVG files!

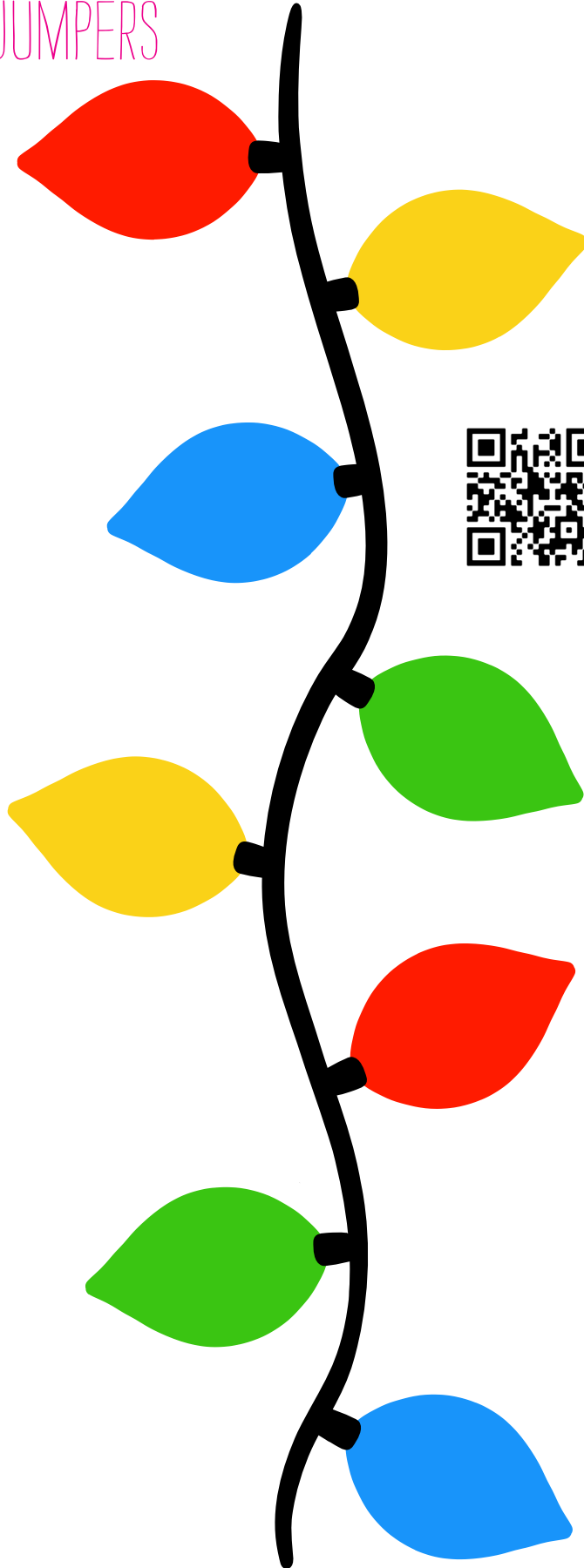


Thank you for making these projects from *Simply Sewing*.
The copyright for these templates belongs to the designer of the project.
They work hard to create projects for you to enjoy, so please don't re-sell or distribute their work without permission. Please do not make any part of the templates or instructions available to others through your website or a third party, or copy it multiple times without our permission. Copyright law protects creative work and unauthorised copying is illegal.
We appreciate your help.

CHRISTMAS JUMPERS

PAGE 18

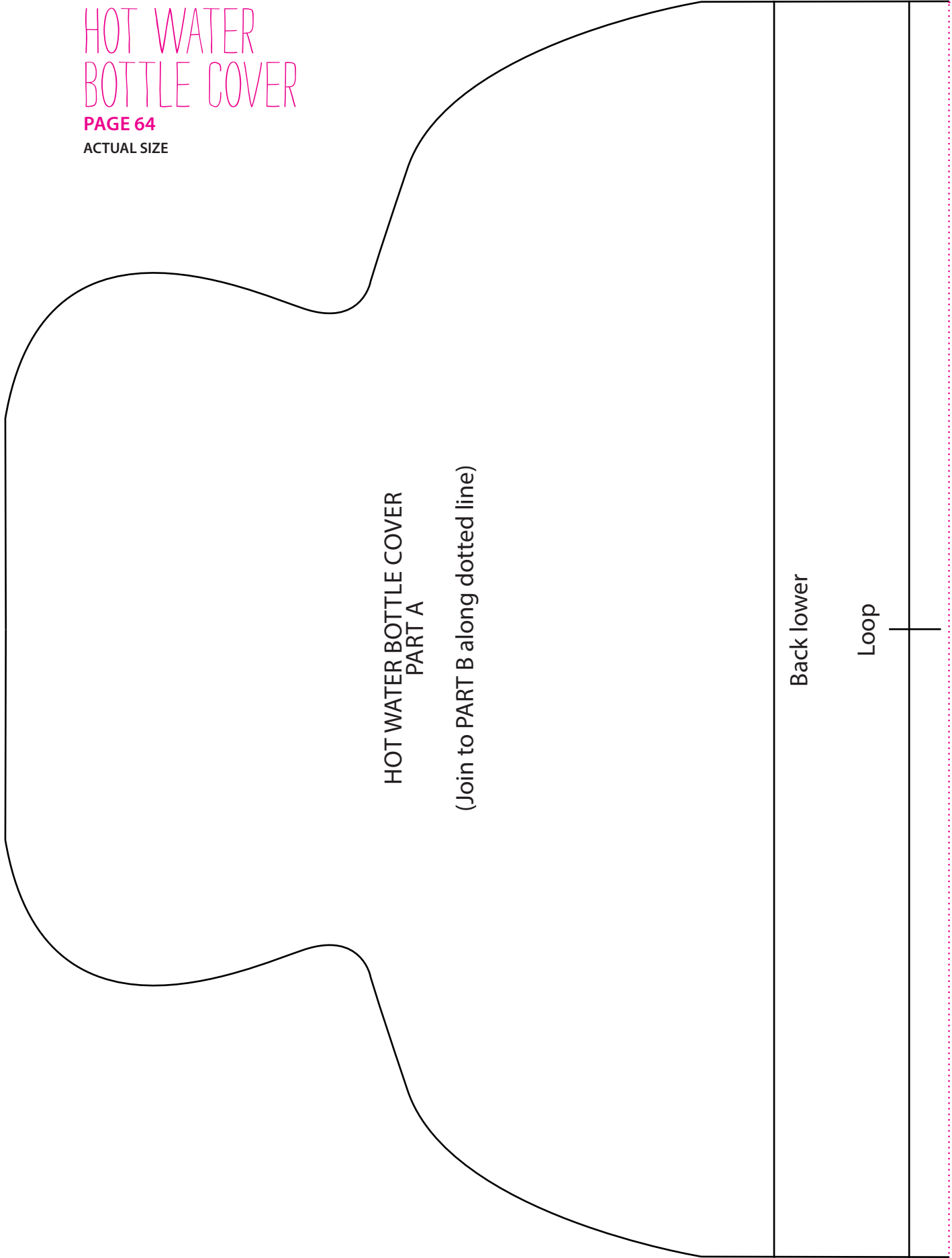
ACTUAL SIZE



All templates are available to download from gathered.how. Scan the code to go straight to the SVG files!

HOT WATER BOTTLE COVER

PAGE 64
ACTUAL SIZE



HOT WATER BOTTLE COVER
PART A
(Join to PART B along dotted line)

Back lower
Loop

ATTACH PART B HERE

HOT WATER BOTTLE COVER

PAGE 64

ACTUAL SIZE

ATTACH PART B TO PART A

ATTACH PART A HERE

Back upper

Front

HOT WATER BOTTLE COVER PART B

(Join to PART A along dotted line)