

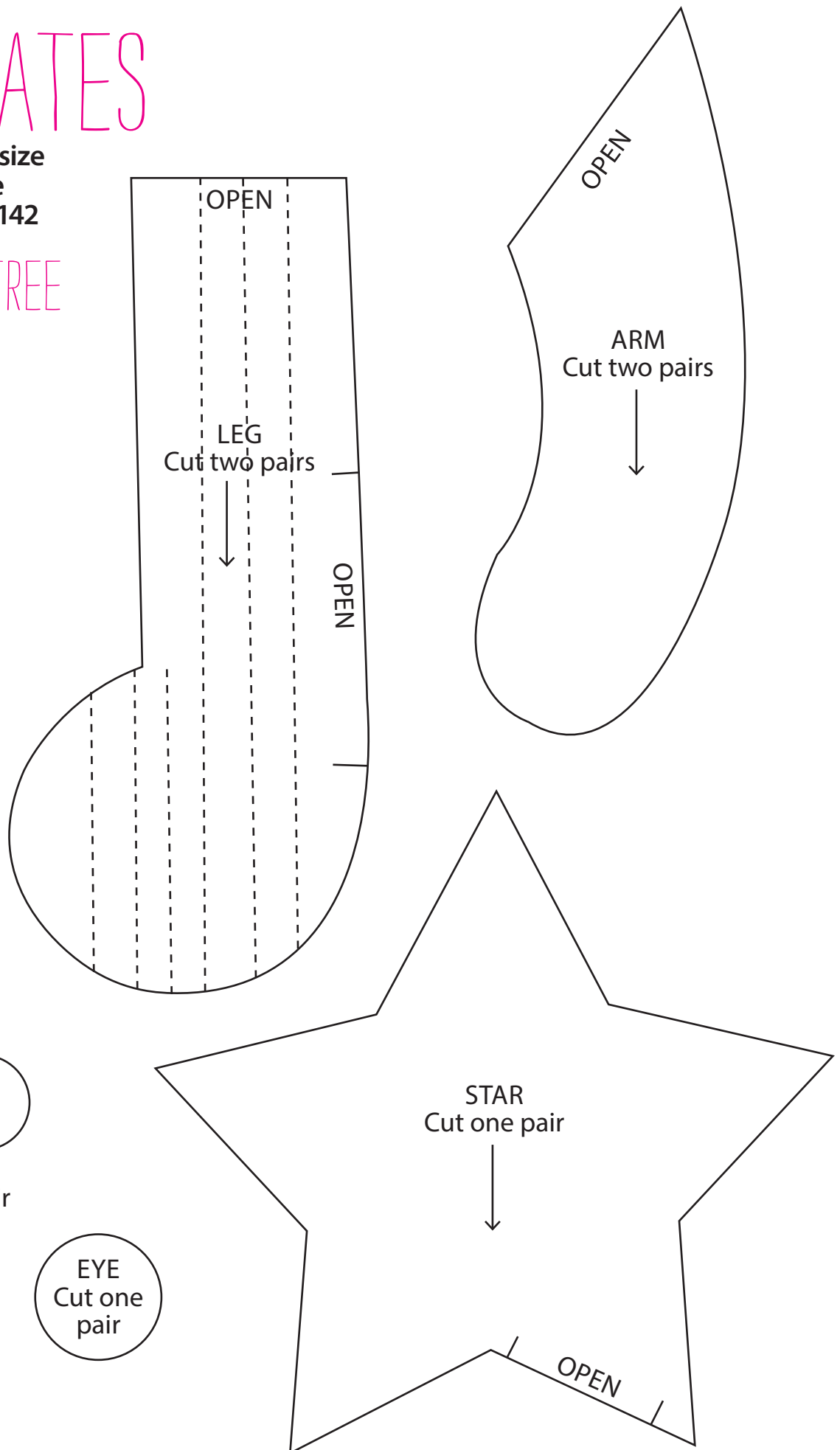
# TEMPLATES

Here are the full-size templates for the projects in issue 142

## CHRISTMAS TREE

PAGE 67

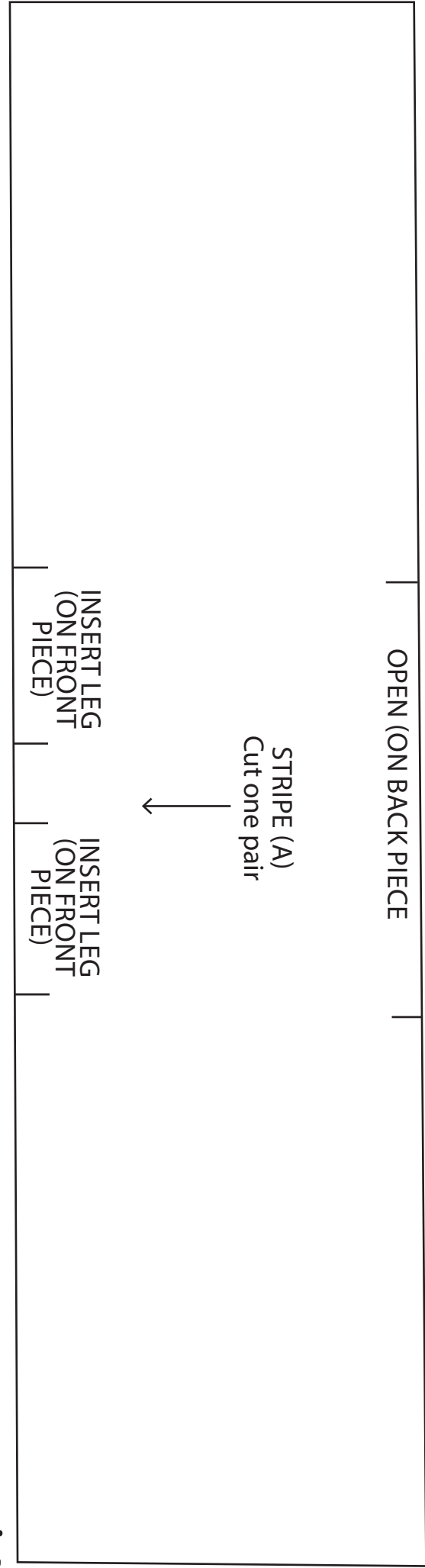
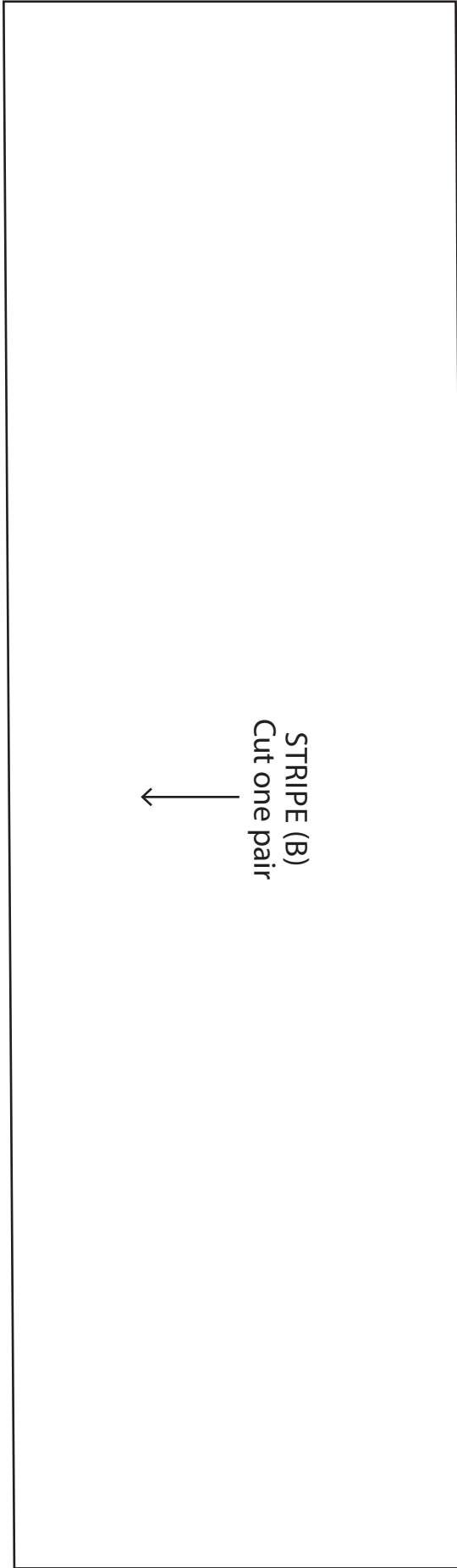
ACTUAL SIZE



# CHRISTMAS TREE

PAGE 67

ACTUAL SIZE



TEMPLATES

CHRISTMAS TREE

PAGE 67

ACTUAL SIZE

BASE  
Cut one

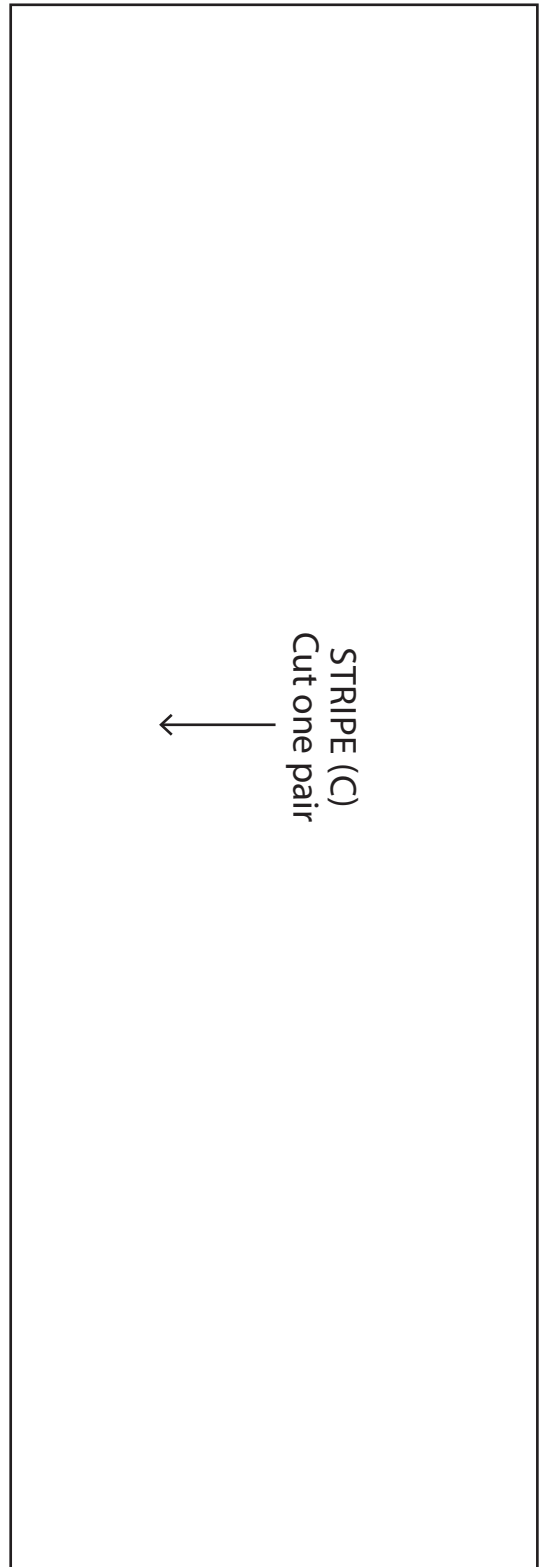
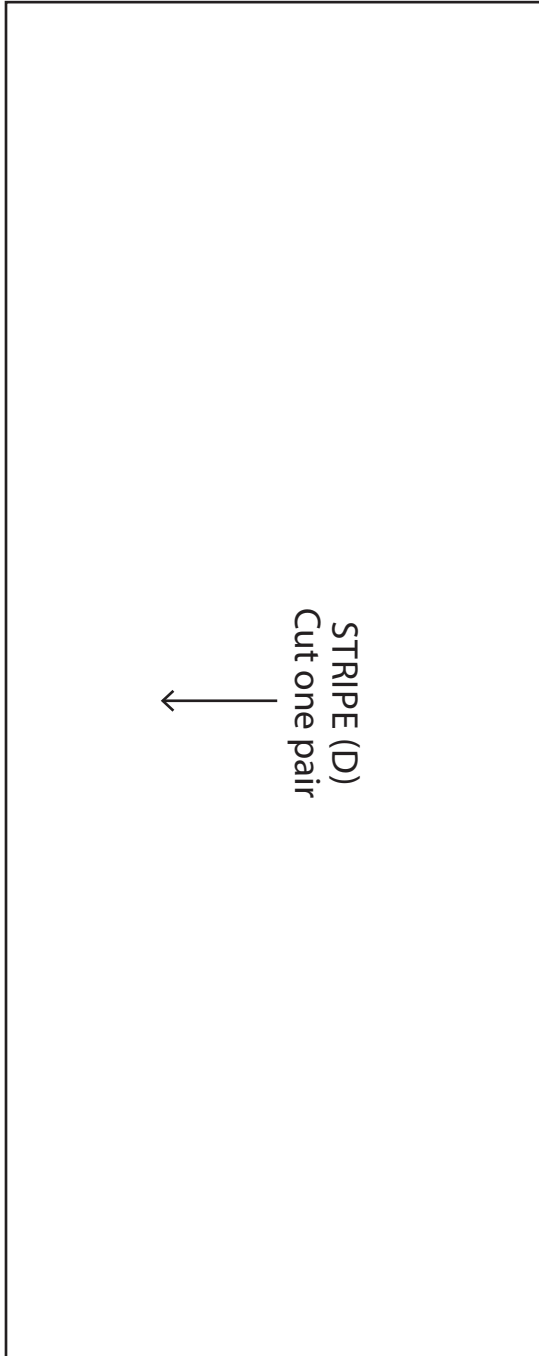
TOP  
Cut one pair

STRIPE (E)  
Cut one pair

# CHRISTMAS TREE

PAGE 67

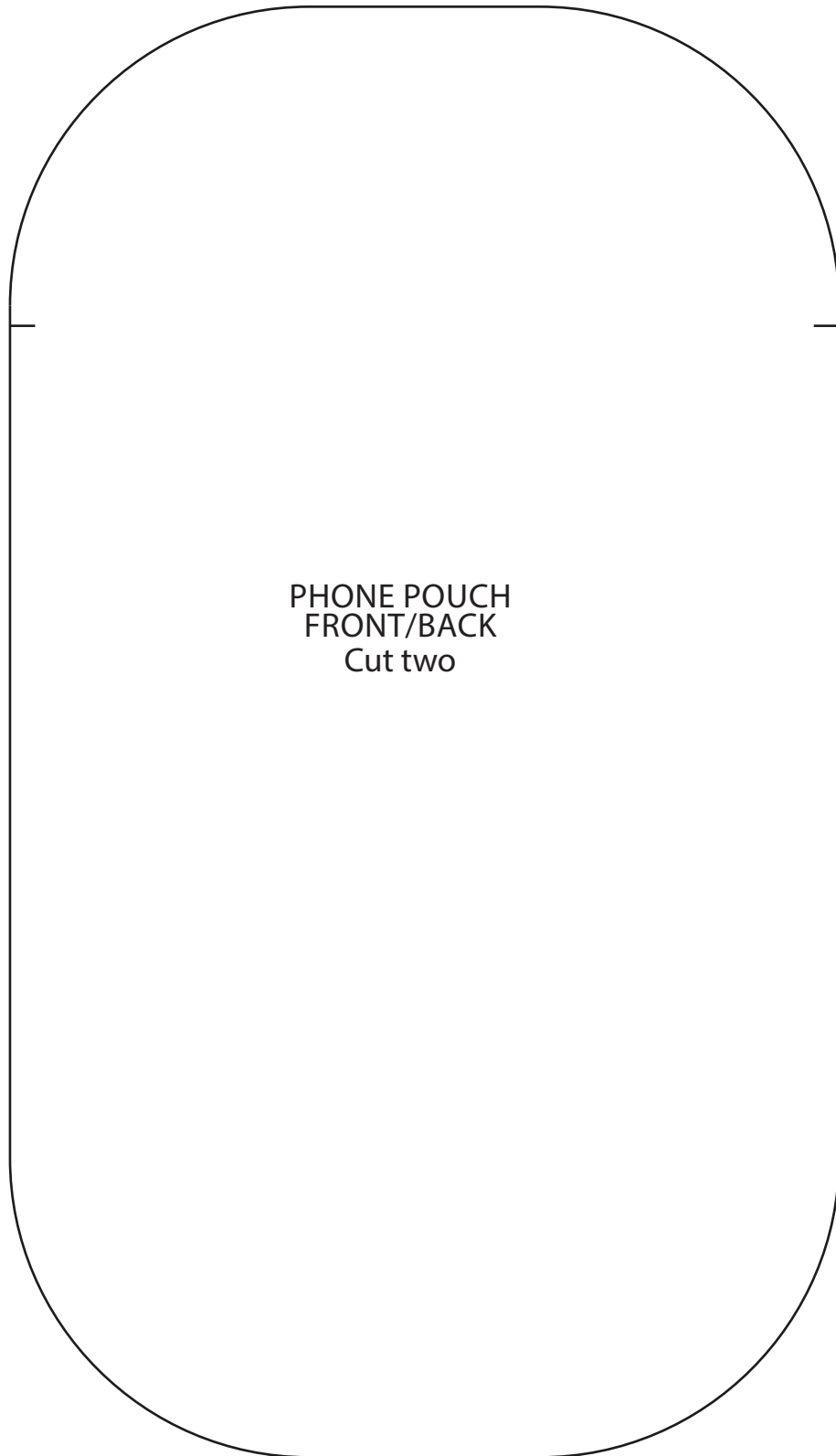
ACTUAL SIZE



# PHONE POUCH

PAGE 61

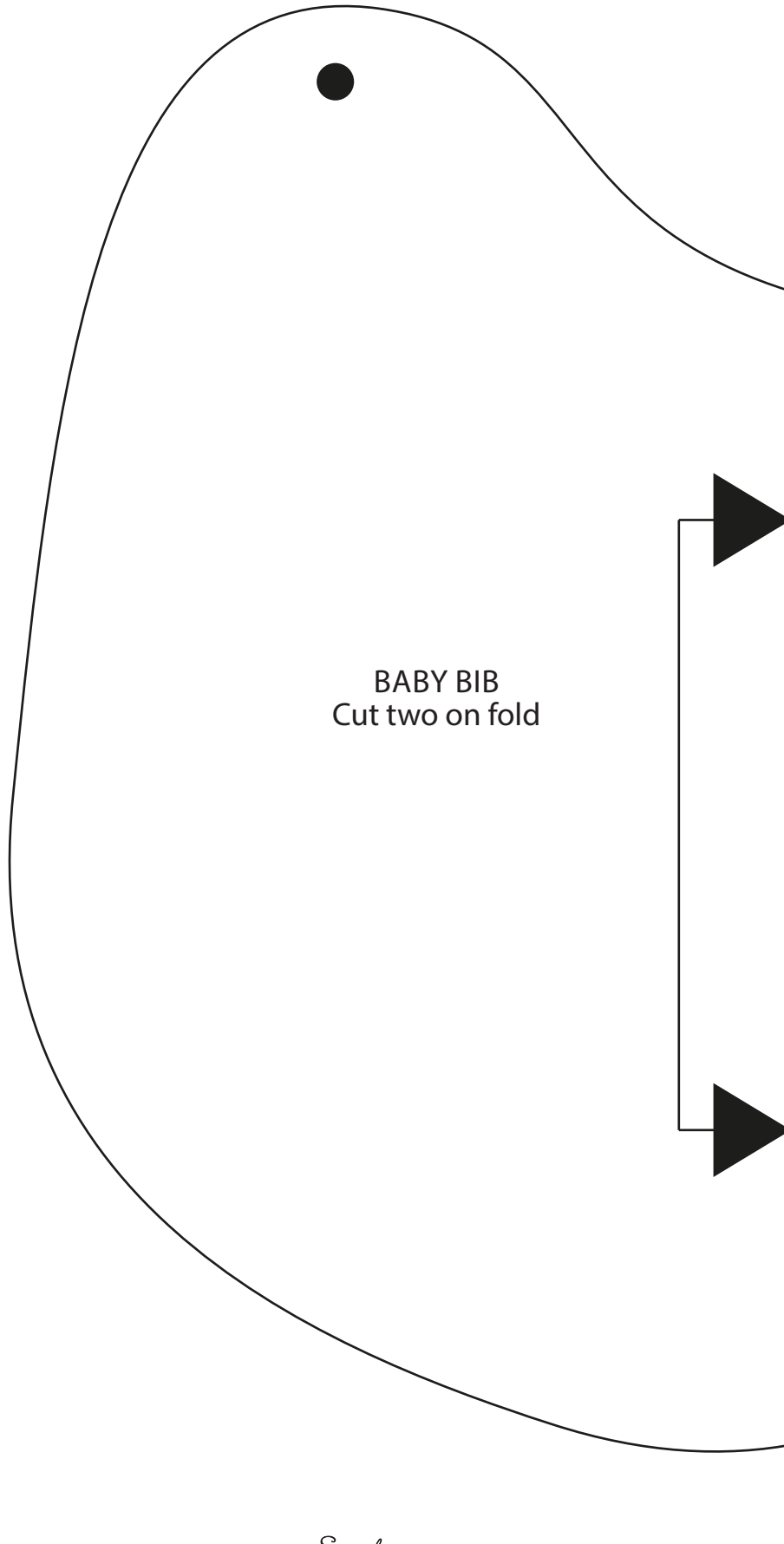
ACTUAL SIZE



PHONE POUCH  
FRONT/BACK  
Cut two

# BABY BIB

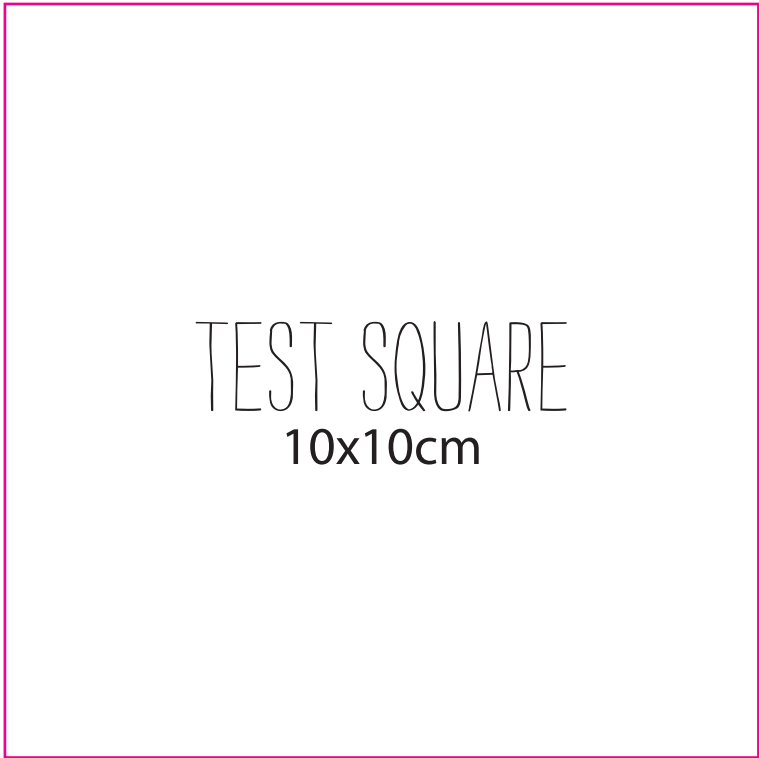
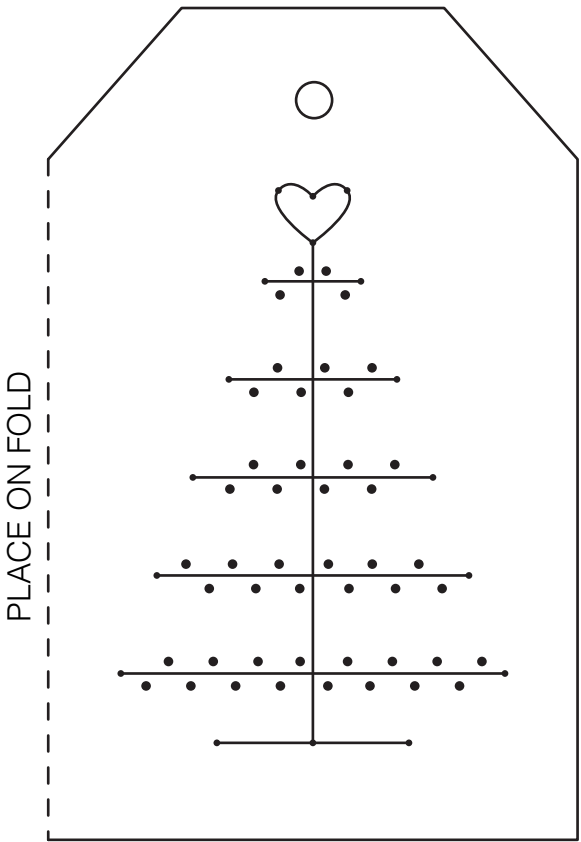
PAGE 49  
ACTUAL SIZE



BABY BIB  
Cut two on fold

# CHRISTMAS TAG

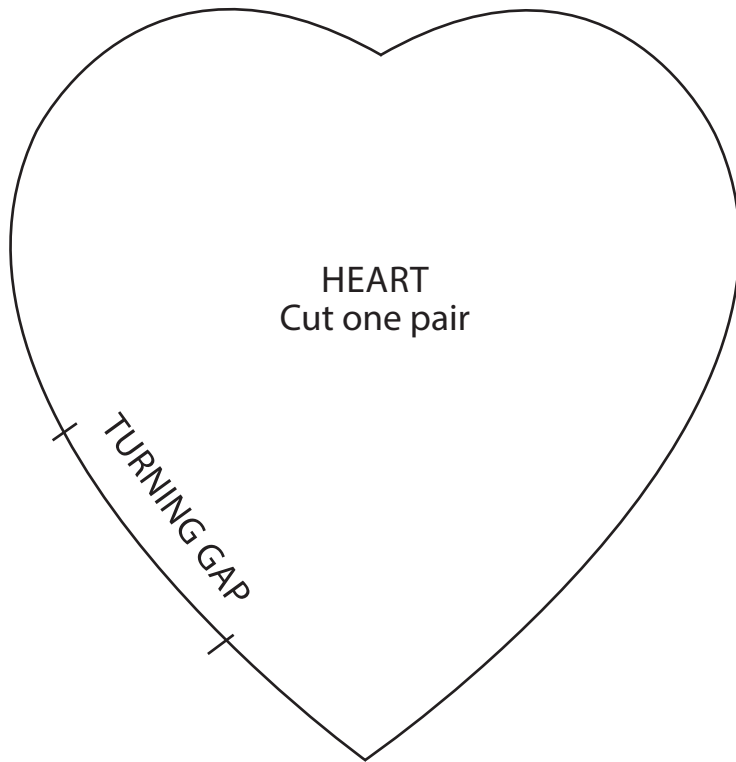
PAGE 65  
ACTUAL SIZE



# LAVENDER BAG

PAGE 34

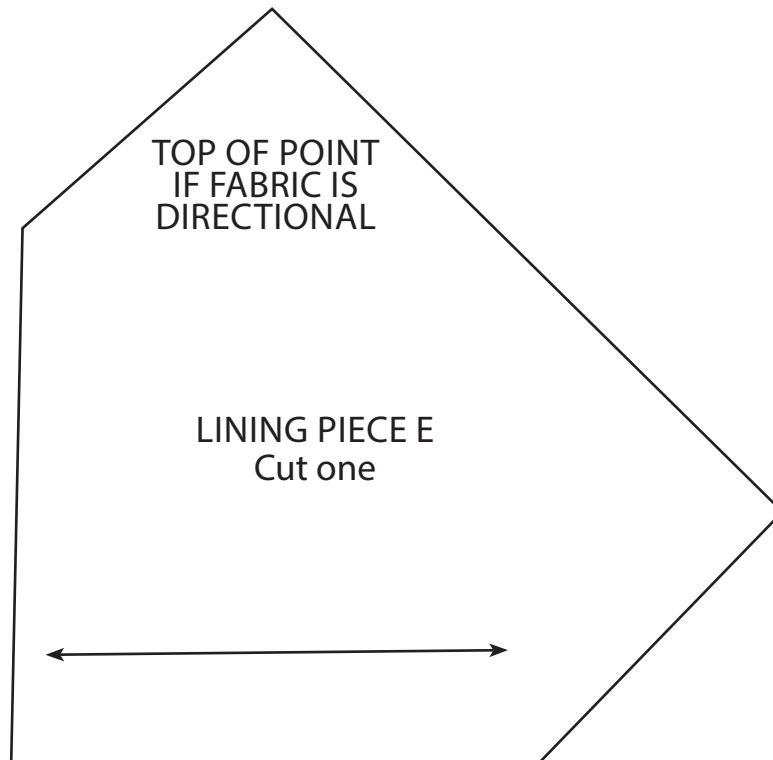
ACTUAL SIZE



# TIE

PAGE 34

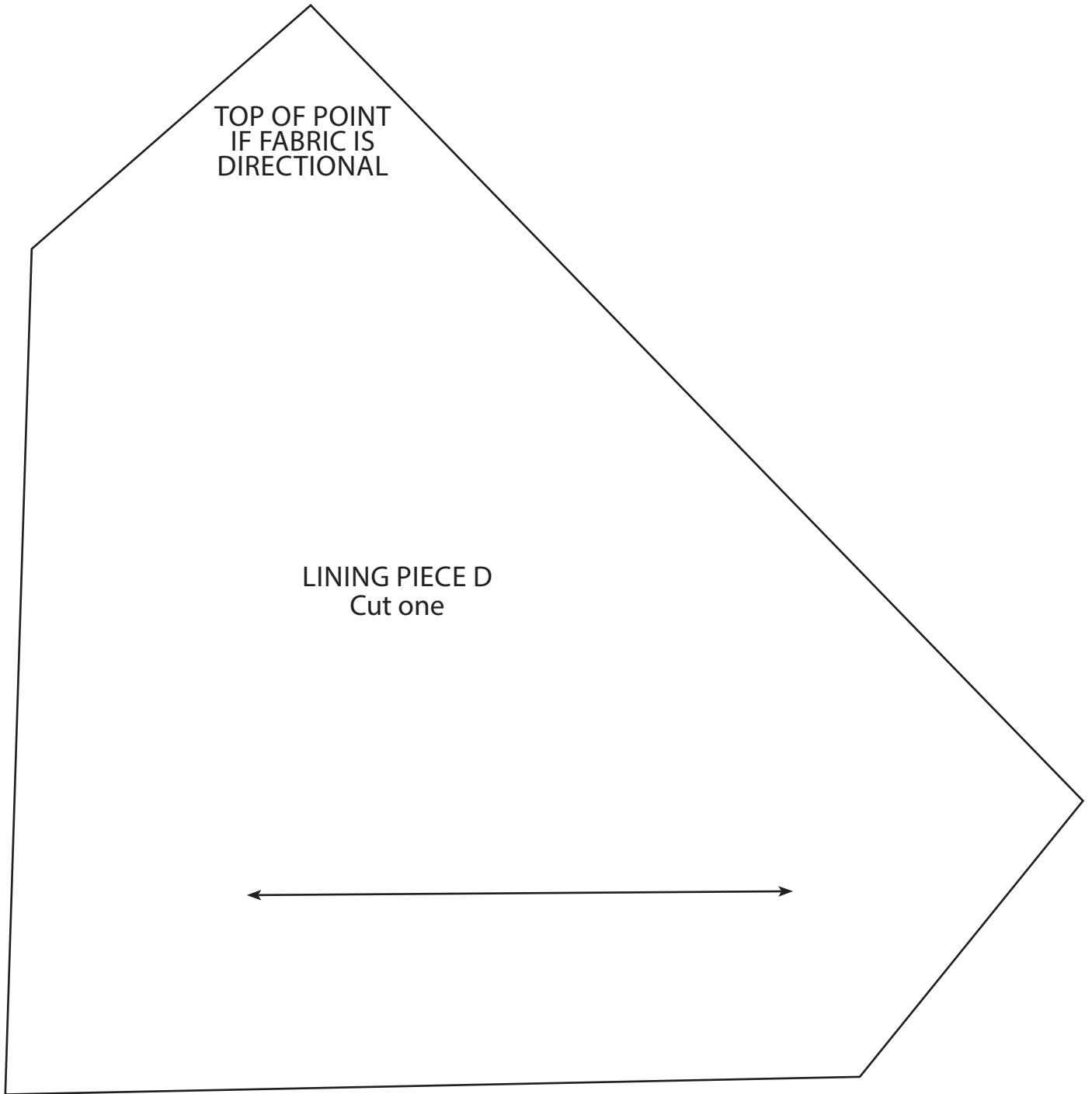
ACTUAL SIZE



TIE

PAGE 34

ACTUAL SIZE

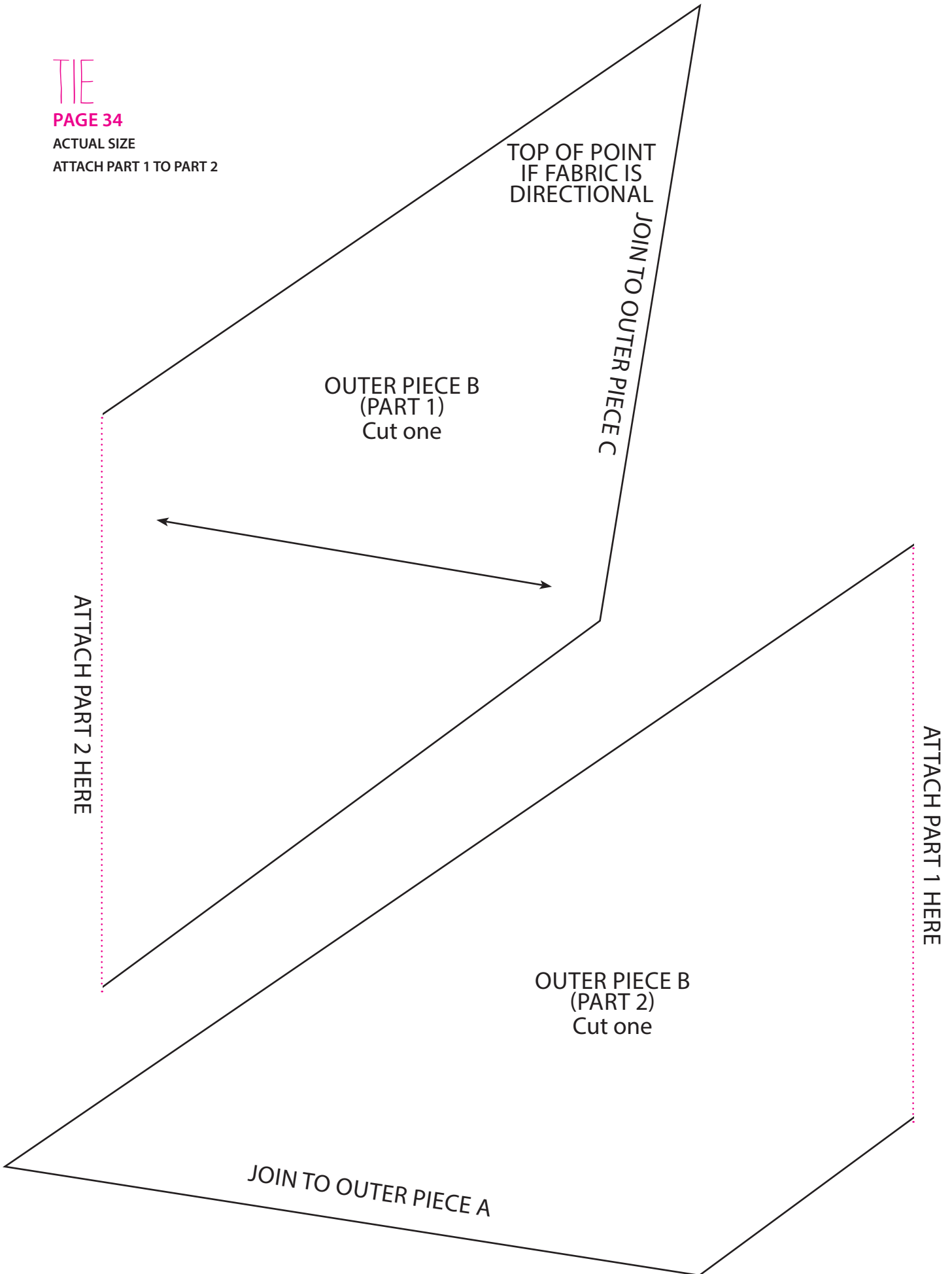


TIE

PAGE 34

ACTUAL SIZE

ATTACH PART 1 TO PART 2



—→ TEMPLATES ←—

TIE

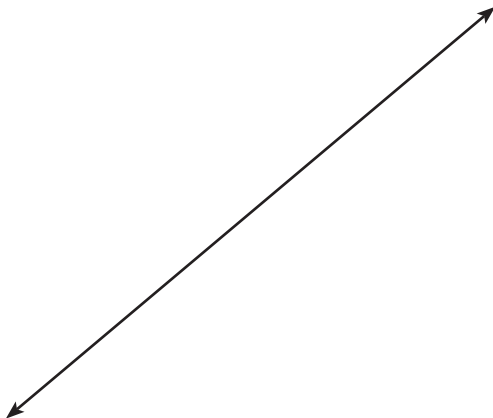
PAGE 34

ACTUAL SIZE

ATTACH PART 1 TO PART 2

TOP OF POINT  
IF FABRIC IS  
DIRECTIONAL

OUTER PIECE C  
(PART 1)  
Cut one



ATTACH PART 2 HERE

ATTACH PART 1 HERE

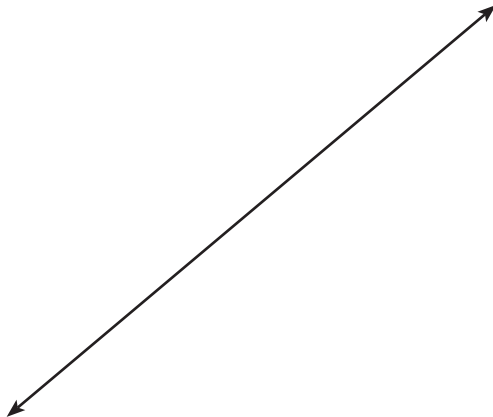
TIE

PAGE 34

ACTUAL SIZE

ATTACH PART 2 TO PART 1

OUTER PIECE C  
(PART 2)  
Cut one



JOIN TO OUTER PIECE B

# TIE

PAGE 34

ACTUAL SIZE

ATTACH PART 1 TO PART 2

TOP OF POINT  
IF FABRIC IS  
DIRECTIONAL

OUTER PIECE A  
(PART 1)  
Cut one

ATTACH PART 2 HERE

ATTACH PART 1 HERE

TIE

PAGE 34

ACTUAL SIZE

ATTACH PART 2 TO PART 1 AND 3

OUTER PIECE A  
(PART 2)  
Cut one

ATTACH PART 3 HERE

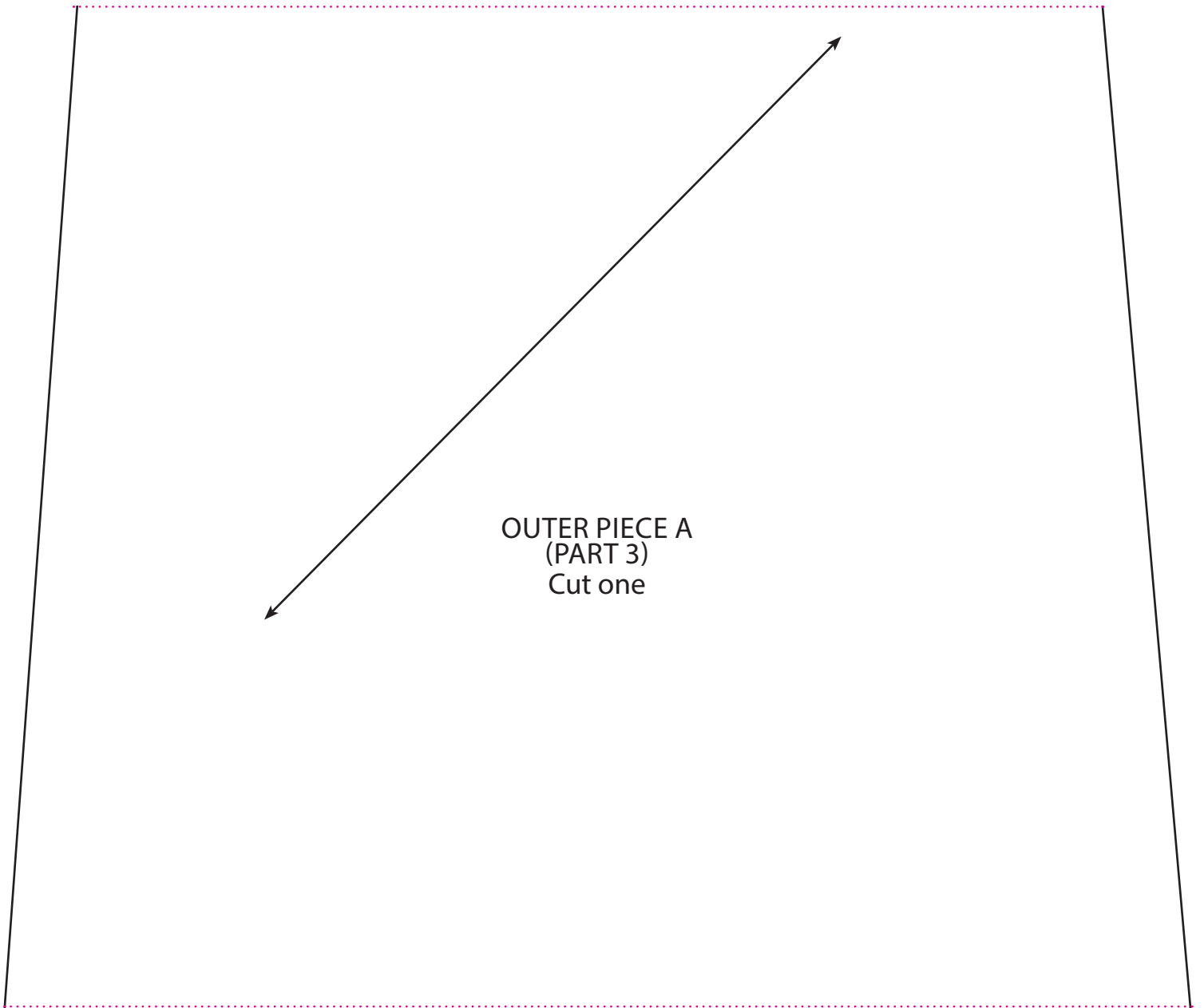
# TIE

PAGE 34

ACTUAL SIZE

ATTACH PART 3 TO PART 2 AND 4

ATTACH PART 2 HERE



OUTER PIECE A  
(PART 3)  
Cut one

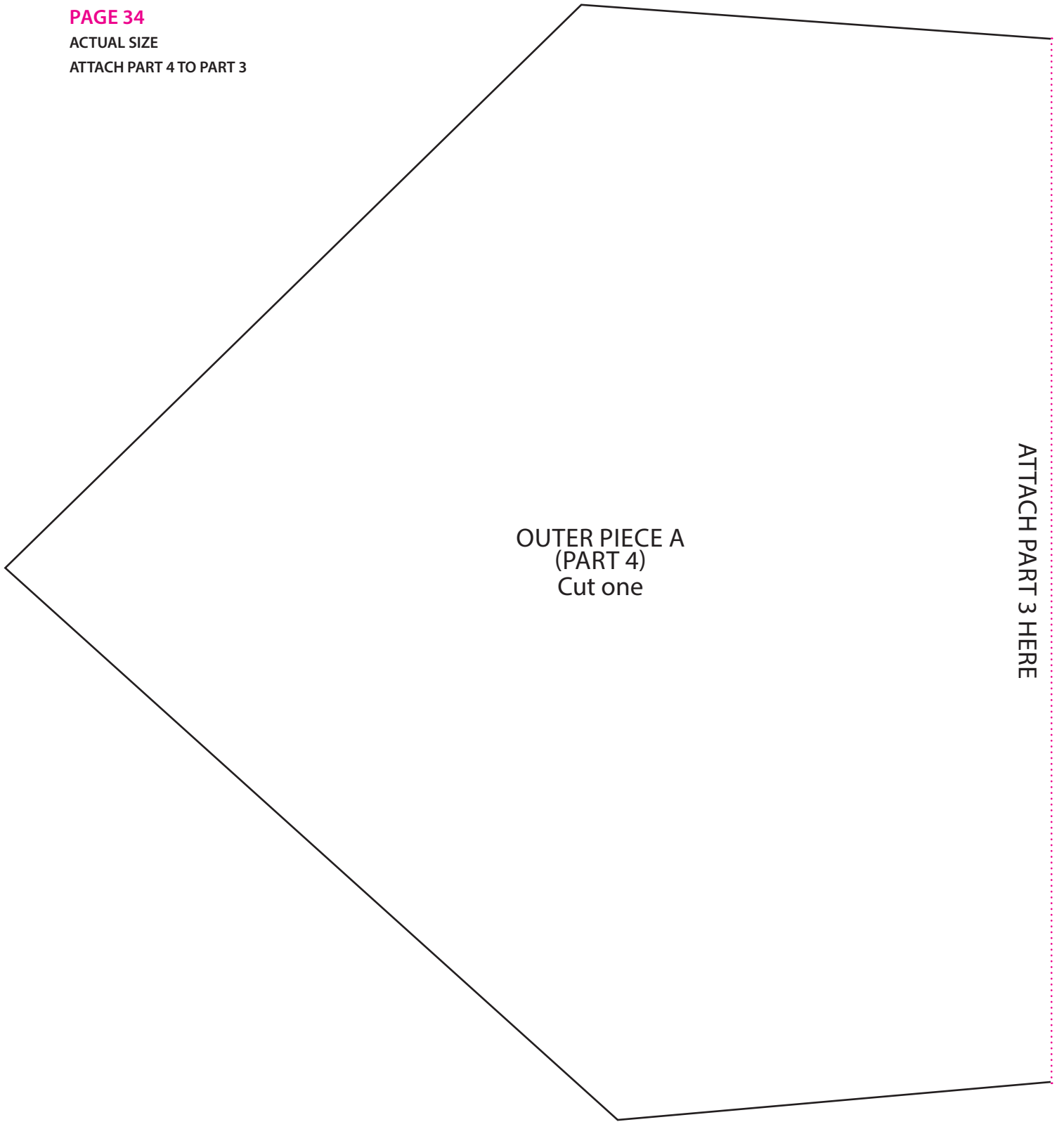
ATTACH PART 4 HERE

# TIE

PAGE 34

ACTUAL SIZE

ATTACH PART 4 TO PART 3



TEMPLATES

TIE

PAGE 34

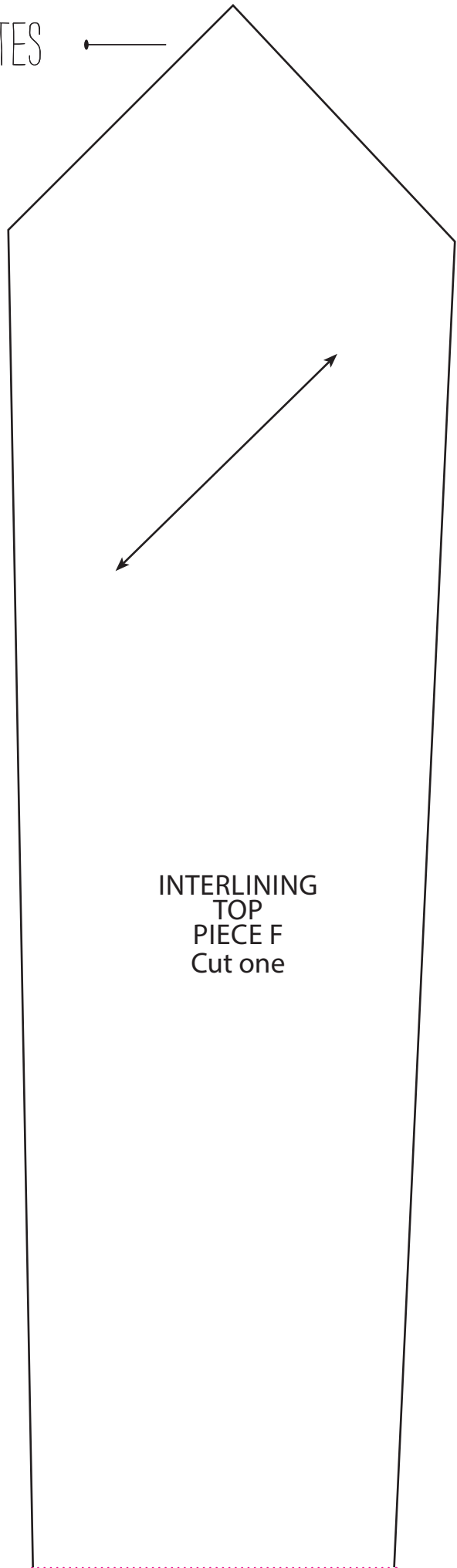
ACTUAL SIZE

ATTACH TOP TO MIDDLE



INTERLINING  
TOP  
PIECE G  
Cut one

ATTACH MIDDLE  
G HERE



INTERLINING  
TOP  
PIECE F  
Cut one

ATTACH MIDDLE  
F HERE

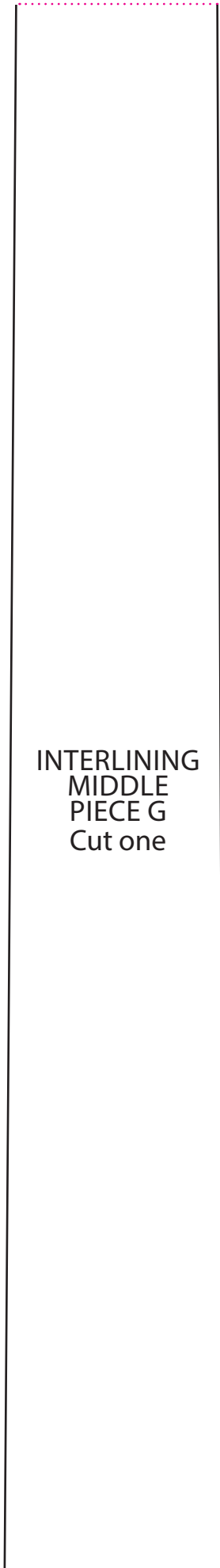
# TIE

PAGE 34

ACTUAL SIZE

ATTACH MIDDLE TO  
TOP AND BOTTOM

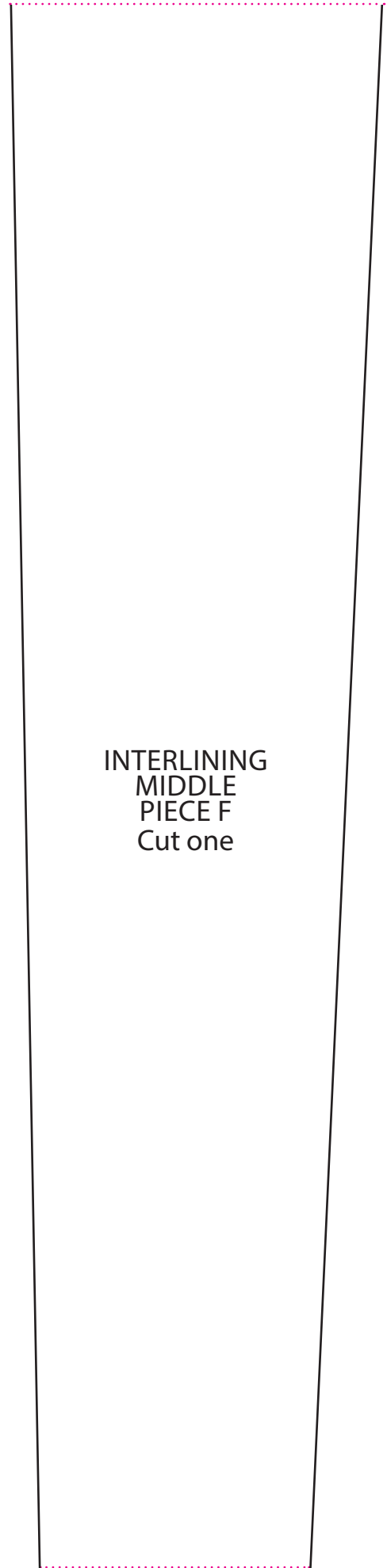
ATTACH TOP G  
HERE



INTERLINING  
MIDDLE  
PIECE G  
Cut one

ATTACH BOTTOM  
G HERE

ATTACH TOP F HERE



INTERLINING  
MIDDLE  
PIECE F  
Cut one

ATTACH BOTTOM  
F HERE

# TIE

PAGE 34

ACTUAL SIZE

ATTACH BOTTOM TO MIDDLE

## TEMPLATES

