

Simply Sewing

THE NAOMI DRESS

SIZES 6-30 (US 2-26/EUR 30-54)



THE NAOMI DRESS

Sew a chic and versatile princess-seamed dress, perfect for sunny days out and picnics in the park!

PACK INCLUDES

- Pattern sheet x 1 (Tracing required)
- Instruction sheet

FABRIC SUGGESTIONS

- Lightweight woven fabrics such as linen blends, cotton lawn or rayon.

YOU WILL NEED

- Main fabric: 2.6m x 115cm or 2.3m x 140cm
- Lining fabric: 1.2m x 115cm or 1m x 140cm
- Buttons: 3 x 25mm
- Clear elastic: 1.5m x 9mm wide
- Matching thread
- Basic sewing kit



Shop more of our sewing patterns at gatheredshop.com

NOTES

- Use a 1.5cm seam allowance, unless otherwise stated.

BODY MEASUREMENTS

SIZE	UK	6	8	10	12	14	16	18	20	22	24	26	28	30
	US	2	4	6	8	10	12	14	16	18	20	22	24	26
	EUR	30	32	34	36	38	40	42	44	46	48	50	52	54
TO FIT BUST	cm	77	81	85	89	94	99	104	109	114	119	124	129	134
	in	30	32	33	35	37	39	41	43	45	47	49	51	53
TO FIT WAIST	cm	62	65	68	71	75	80	85	91	97	103	109	115	121
	in	24	26	27	28	30	31	33	36	38	41	43	45	48
TO FIT HIPS	cm	84	88	92	96	101	106	111	116	121	126	131	136	141
	in	33	35	36	38	40	42	44	46	48	50	52	54	56

Simply
Sewing
FRESH IDEAS WITH FABRIC

WWW.GATHERED.HOW/SIMPLYSEWING

©Designed and printed in the UK for *Simply Sewing*. Supplied by Our Media Company Ltd, Bristol, BS1 4ST.
For individual, private use only and not for commercial or manufacturing purposes. Not for resale.

01



02



05

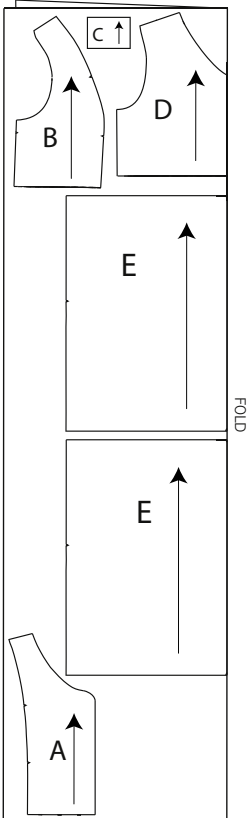


06

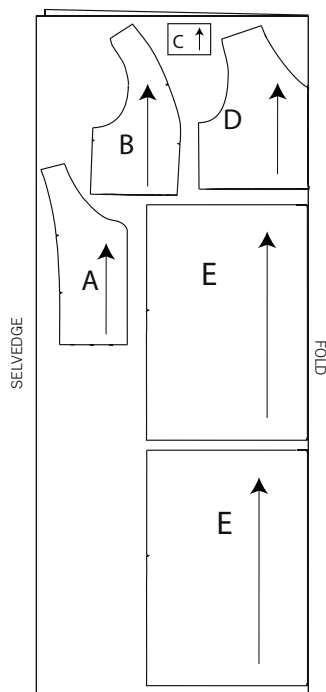


CUTTING LAYOUTS

MAIN FABRIC ALL SIZES
115CM WIDE

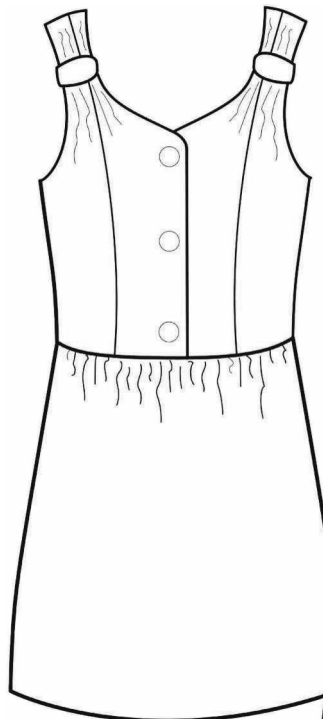


MAIN FABRIC ALL SIZES
140CM WIDE

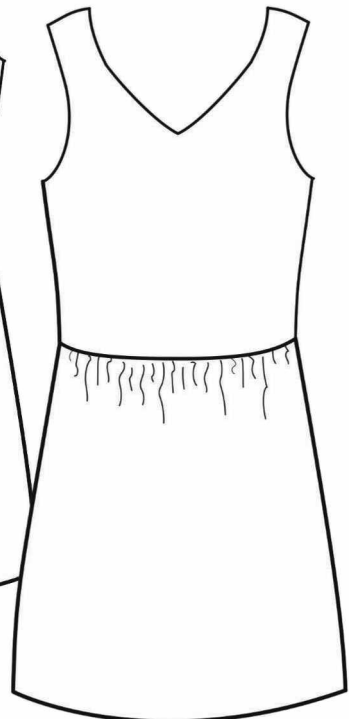


DIAGRAMS

FRONT



BACK



MI DRESS



STITCHING TERMS

Right side (RS)/ Wrong side (WS): This is the right side and wrong side of the fabric. The right side usually has the print, design or texture and the wrong side is usually plain or duller in appearance.

Machine tack: A line of stitching worked using a long stitch length to hold a section in place. Don't backstitch at the start and end.

Finish the seams: Finish the raw edges with a zigzag stitch or an overlocker.

Press: Pressing fabric is placing the iron down holding it for a few seconds, lifting it and placing it down again. Ironing is the movement of sliding the iron back and forth to remove creases.

Understitch: A line of stitching worked close to the seam line, usually on the side that will be on the inside of the garment, such as the facing. This will hold the seam allowance in place when the garment is worn.

Staystitch: Stitching in areas prone to stretching such as necklines to hold the fabric in shape while it is being worked on.

Topstitch: Stitching usually from the right side of the garment, commonly used to hold seam allowances in place. It can also sometimes be used for decorative purposes or to add strength.

Toile: A test garment, often made from calico or muslin, to check the fit or test a pattern before the real fabric is used. Known as a muslin in the US.

NOTES

Seam allowances are 1.5cm, unless otherwise stated.

CUTTING OUT

Step one From main fabric, cut:

Centre Front Bodice (A): one pair

Side Front Bodice (B): one pair

Shoulder Tab (C): one pair

Back Bodice (D): one on fold

Front/Back Skirt (E): two on fold

Step two From lining fabric, cut:

Centre Front Bodice (A): one pair

Side Front Bodice (B): one pair

Back Bodice (D): one on fold

MAKE THE DRESS

STITCHING THE BODICE

Step one With right sides (RS) of the fabric together, stitch the Centre Front Bodice pieces to the Side Front Bodice pieces along the princess seams. Clip into the curves in the seam allowances and press the seam allowances towards the side seams. ⁰¹

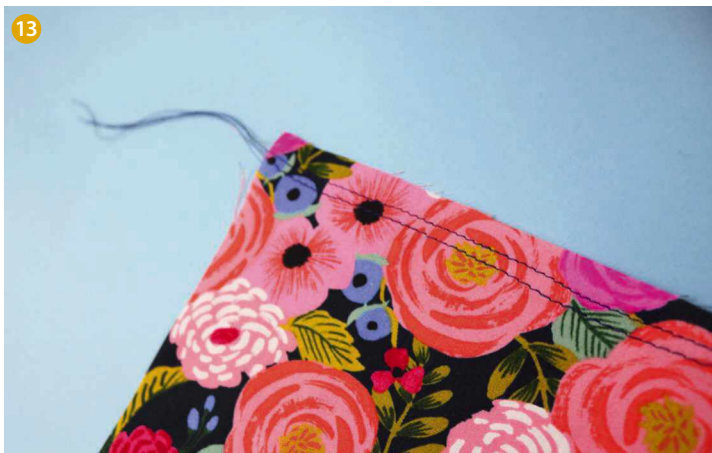
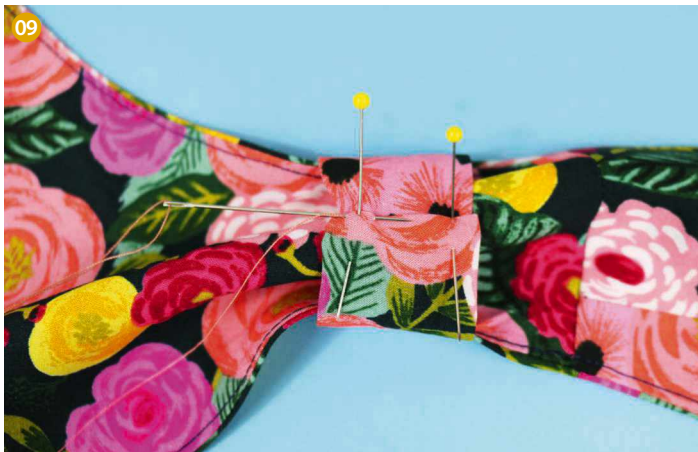
Step two With RS of the fabric together, stitch the Front and Back Bodice pieces together at the shoulder seams. Press the seam allowances open. ⁰²

Step three Repeat the above steps to assemble the bodice lining pieces.

Step four Pin the main bodice and lining RS together around the neckline and either side of the centre front opening. Stitch with a 1cm seam allowance. Clip into the seam allowance at regular intervals around the neckline and into the V-shaped centre back. ⁰³

Step five Turn the bodice RS out and press the lining towards the neckline seam allowance. Understitch the lining to the seam allowance around the neckline and either side of the centre front opening. This will be tricky where the centre front meets the neckline, so stitch as far as you can either side. ⁰⁴

Step six Turn the bodice wrong side (WS) out again and pin the bodice and



lining together at the armholes, matching the shoulder seams. Stitch in place. Clip into the seam allowance at regular intervals around the armholes. ⁰⁵

Step seven Turn the bodice RS out and press the lining towards the seam allowance. Understitch the lining to the seam allowance around the armholes. This will be tricky at the shoulder seams, so stitch as far as you can either side of the shoulder seam. ⁰⁶

ADDING THE SHOULDER TABS

Step one With RS of the fabric together, fold both Shoulder Tabs in half lengthways and stitch with a 1cm seam allowance. ⁰⁷

Step two Turn the Shoulder Tabs RS out and press, with the seam sitting centrally on the underside.

Step three Press 1cm of one end of each Shoulder Tab to the inside so the fabric is WS together. ⁰⁸

Step four Place a Shoulder Tab around each of the front shoulders on the bodice. Insert the raw edge of the Shoulder Tabs by 1cm into the pressed edges at the other end to create a tube. Make sure the Shoulder Tab seam is on the inside of the bodice. Slipstitch the seams together by hand. ⁰⁹

Step five With the RS of the fabric together, stitch the side seams together, matching the main pieces together, and the lining pieces together on each side. Sew in one long pass on each side, ensuring the underarm seams align. Press the seam allowance open. ¹⁰

ADDING BUTTONS AND BUTTONHOLES

Step one Check you are happy with the position and number of the buttons and make any necessary adjustments.

Step two With the bodice laid out in front of you, stitch three buttonholes on the left Centre Front Bodice piece. Hand-stitch three buttons on the right Centre Front Bodice piece. To double check the position of your buttons and

buttonholes, they should be centred 2cm from the edge. ¹¹

Step three Match the notches on the hem of the Centre Front Bodice pieces and machine tack in place along the hem within the seam allowance. Then machine tack round the rest of the bodice to hold the lining in place. ¹²

STITCHING THE SKIRT

Step one Finish the waist seams of the bodice and both skirt pieces separately.

Step two Add two rows of long length gathering stitches (leaving long tails of thread at either end) to the waist seam of the Front and Back Skirt pieces within the seam allowance at 1cm and 1.3cm from the edge. Make sure you don't backstitch at either end of the gathering stitches, as this will prevent the threads being pulled. ¹³

Step three With RS of the fabric together, pin then stitch the side seams of the Front and Back Skirt, aligning raw edges and matching the notches. Finish the seams and press towards the back.

Step four Gently pull the gathering stitches and distribute the gathers evenly around the waist.

Step five Cut a length of clear elastic that measures the same as the finished waist measurement of the size you have used plus 3cm for overlap.

Step six With RS together, pin the bodice and skirt together around the waist, matching the side seams and notches. Also pin the elastic around the waist, starting at a side seam and ensuring that the elastic is evenly distributed around the waist. You should have 1.5cm left over at the start and end, so fold this over and pin. Using lots of pins here will help. ¹⁴

Step seven Going slowly, stitch the waist seam with a zigzag stitch, making sure you are stitching onto the elastic to hold it in place. Start and finish stitching at the side seam. Note: the elastic won't gather the bodice or the skirt but it does provide a little bit of stretch so you can easily put the garment on and take it off without breaking the stitches (and it also means you don't need a zip). ¹⁵

MI DRESS



FINISHING THE DRESS

Step one Check you are happy with the length of the dress. Hem the skirt by folding 1cm to the inside and then a further 2cm. Start and finish stitching at one of the side seams. **16**

FINISHED GARMENT MEASUREMENTS														
SIZE	UK	6	8	10	12	14	16	18	20	22	24	26	28	30
	US	2	4	6	8	10	12	14	16	18	20	22	24	26
	EUR	30	32	34	36	38	40	42	44	46	48	50	52	54
FINISHED BUST	cm	89	93	97	101	106	111	116	121	126	131	136	141	146
	in	35	37	38	40	42	44	46	48	50	52	54	56	57
FINISHED WAIST	cm	92	95	98	101	105	110	115	121	127	133	139	145	151
	in	36	37	39	40	41	43	45	48	50	52	55	57	59
FINISHED HIP	cm	123	127	131	135	140	145	150	155	160	165	170	175	180
	in	48	50	52	53	55	57	59	61	63	65	67	69	71

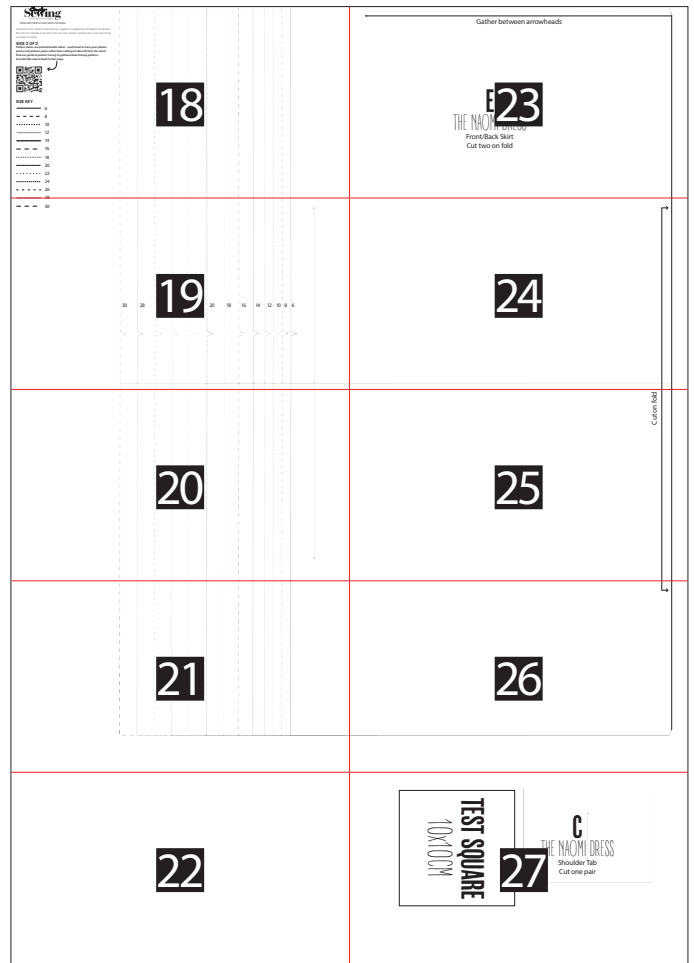
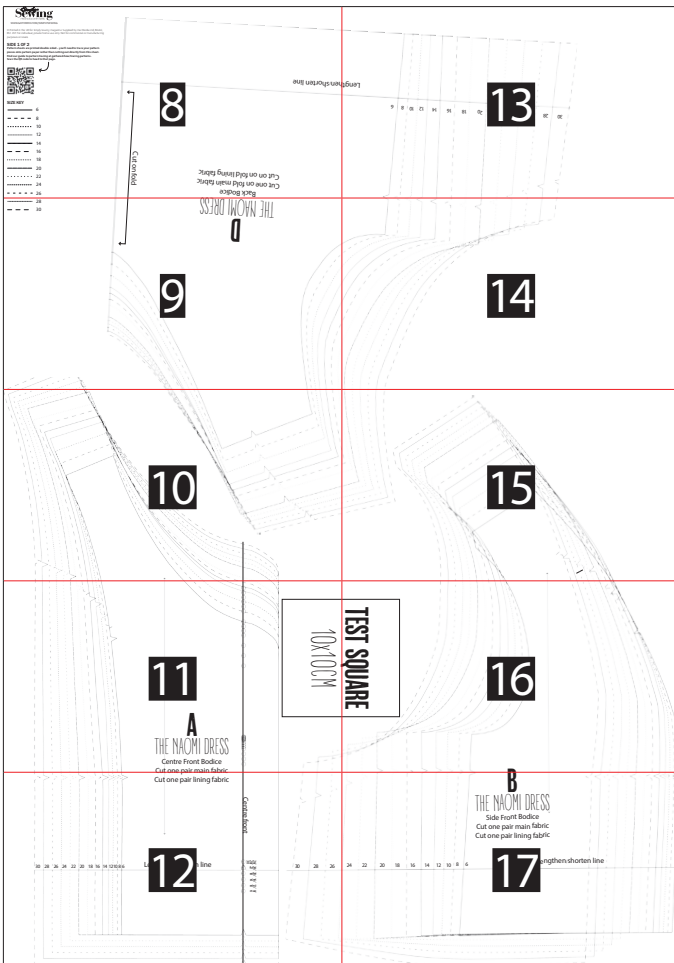


Simply Sewing
FRESH IDEAS WITH FABRIC
WWW.GATHERED.HOW/SIMPLYSEWING

© Printed in the UK for *Simply Sewing*. Supplied by Our Media Ltd, Bristol, BS1 4ST. For individual, private home use only. Not for commercial or manufacturing purposes or resale.

HOW TO PRINT THIS PATTERN

Print out the following pages on A4 paper at 100%.
Overlap the red lines and tape the sheets in place using the guide below.



SIDE 1 OF 2

Pattern sheets are printed double sided – you'll need to trace your pattern pieces onto pattern paper rather than cutting out directly from this sheet. Find our guide to pattern tracing at gathered.how/tracing-patterns. Scan the QR code to head to that page.



SIZE KEY

_____	6
-----	8
-----	10
.....	12
-----	14
-----	16
.....	18
-----	20
.....	22
-----	24
-----	26
.....	28
-----	30

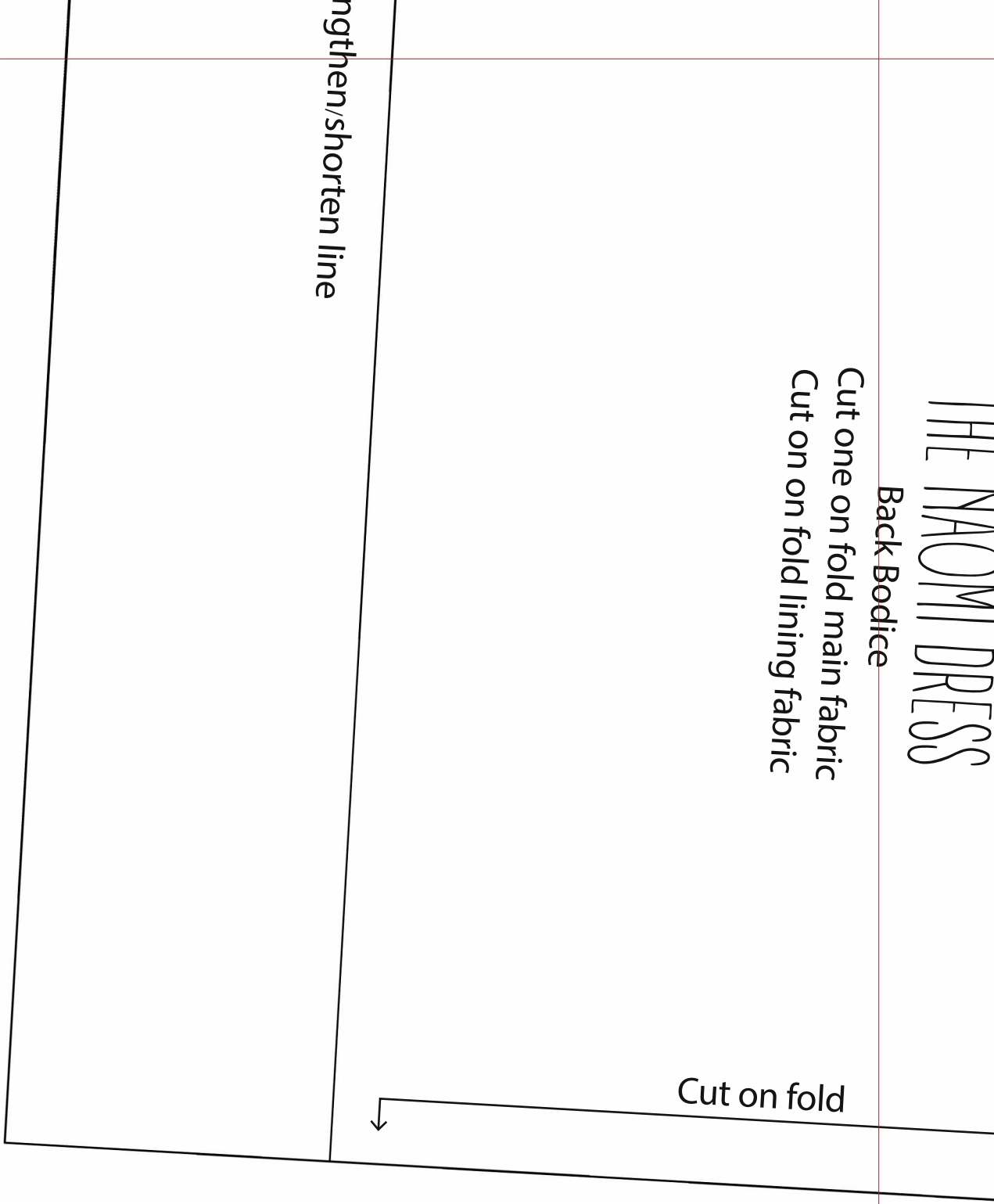
THE NAOMI DRESS

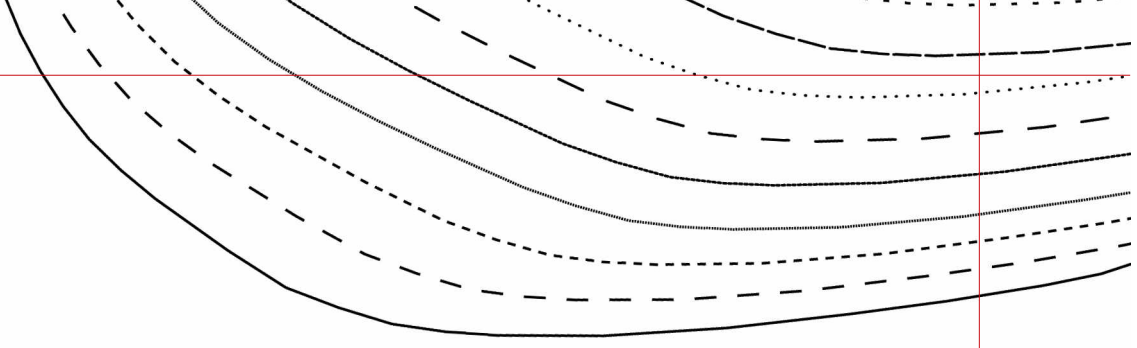
Back Bodice

Cut one on fold main fabric
Cut one on fold lining fabric

Cut on fold

lengthen/shorten line



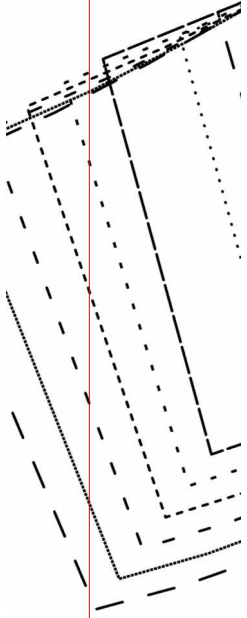
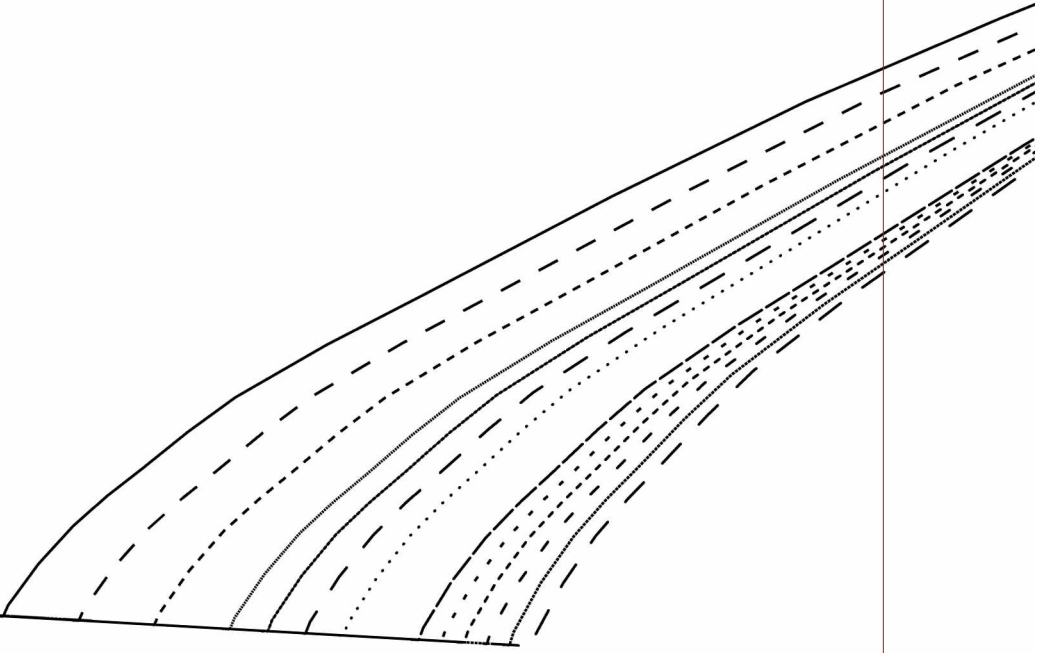


THE NAOMI DRESS

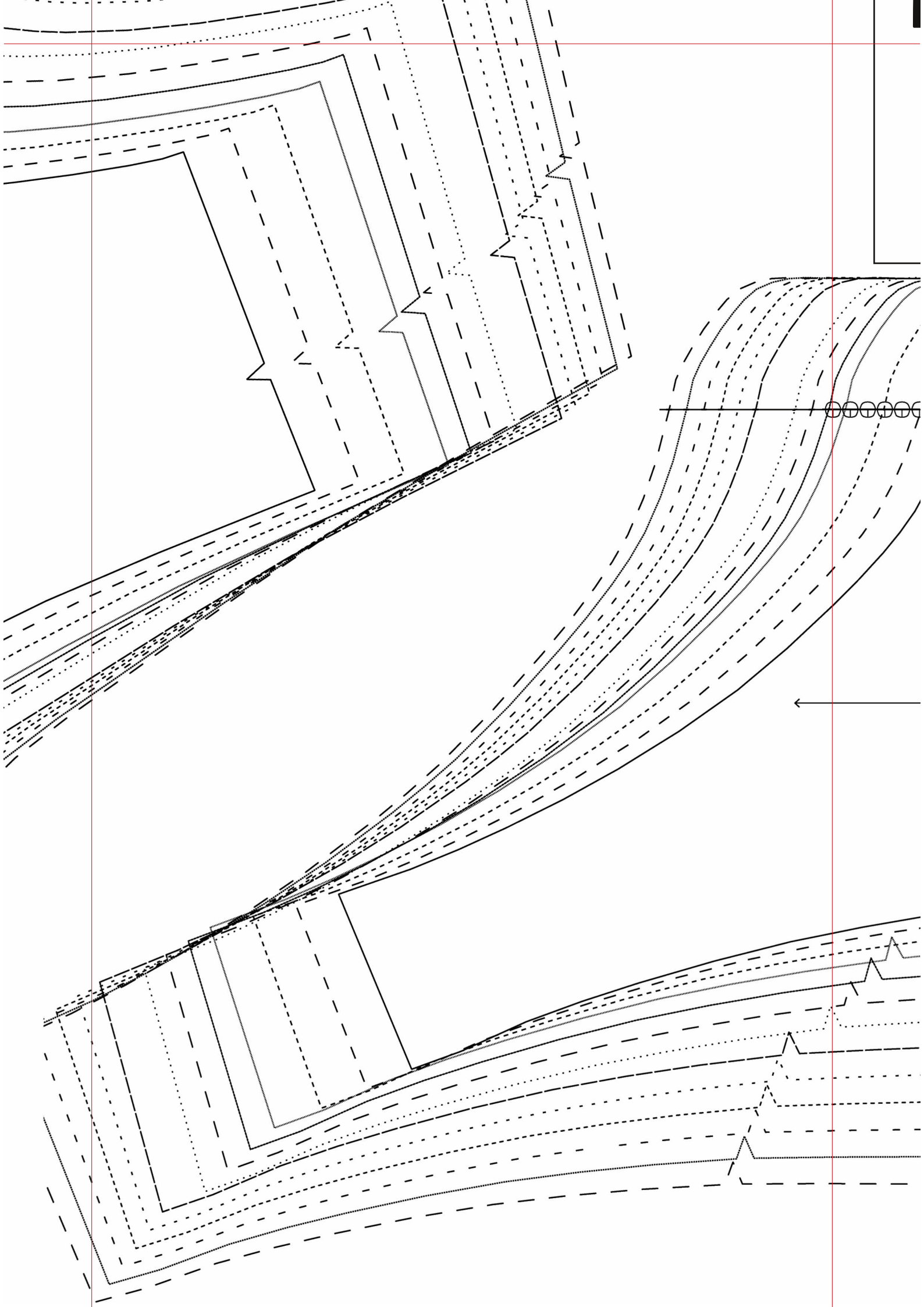
D

Back Bodice

Cut one on fold main fabric
Cut on on fold lining fabric

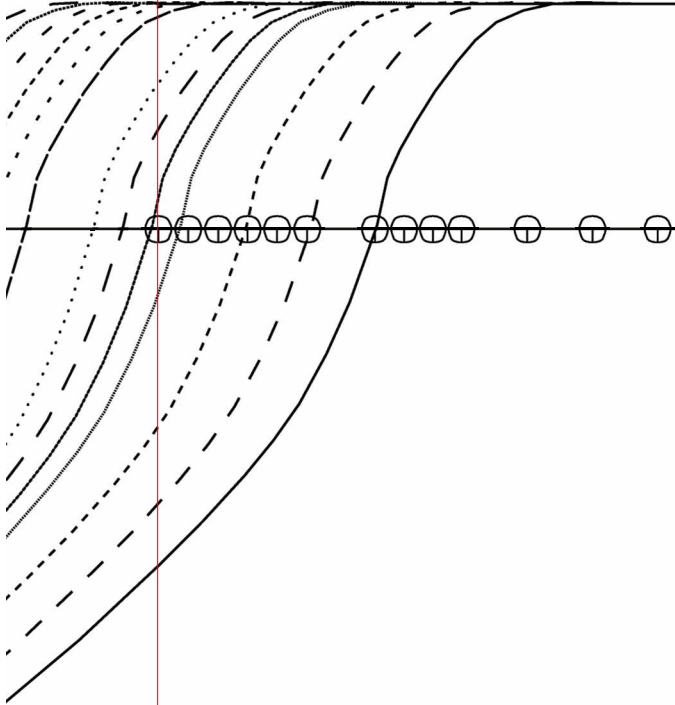
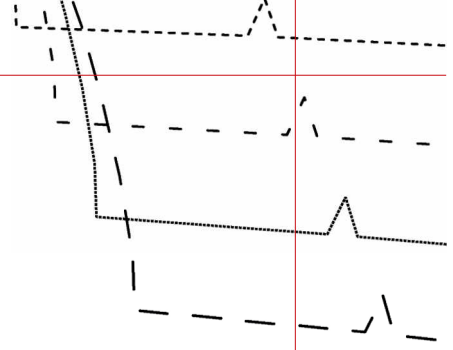


- — — — 26
- 28
- — — — 30
- 20
- 22
- 24



PLU QUAIL

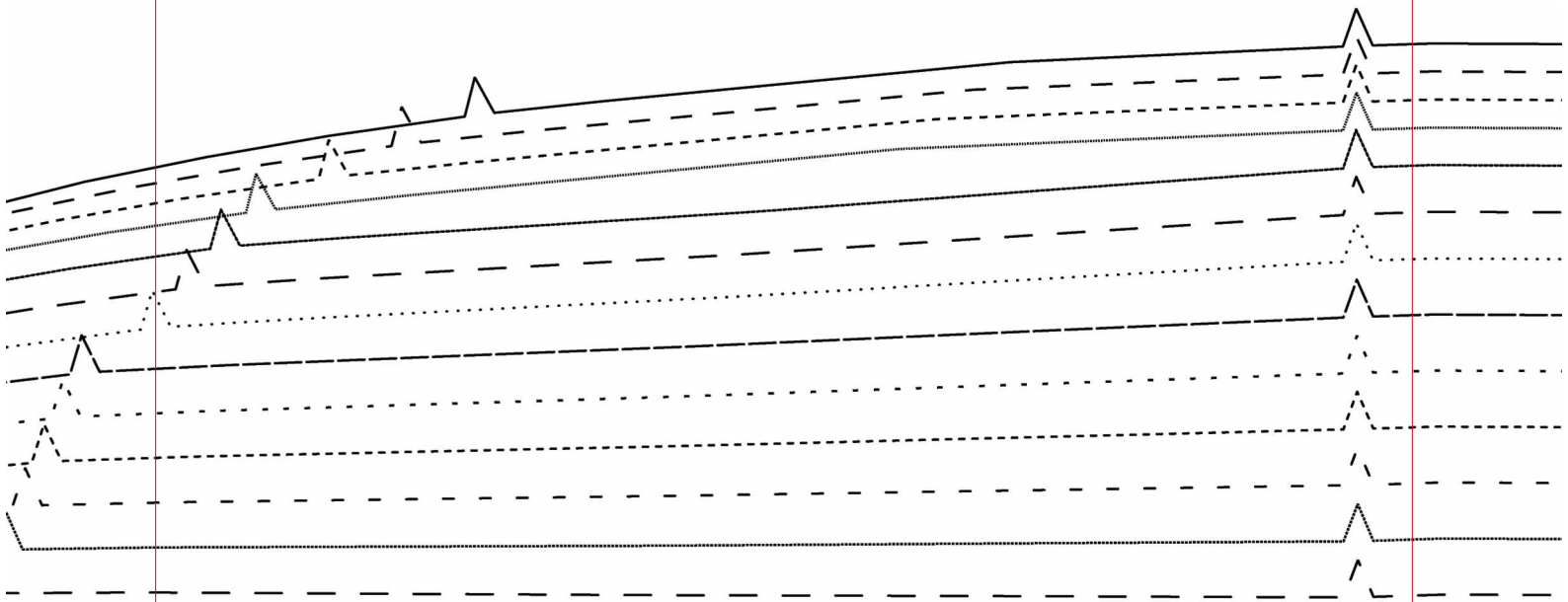
10x10CM

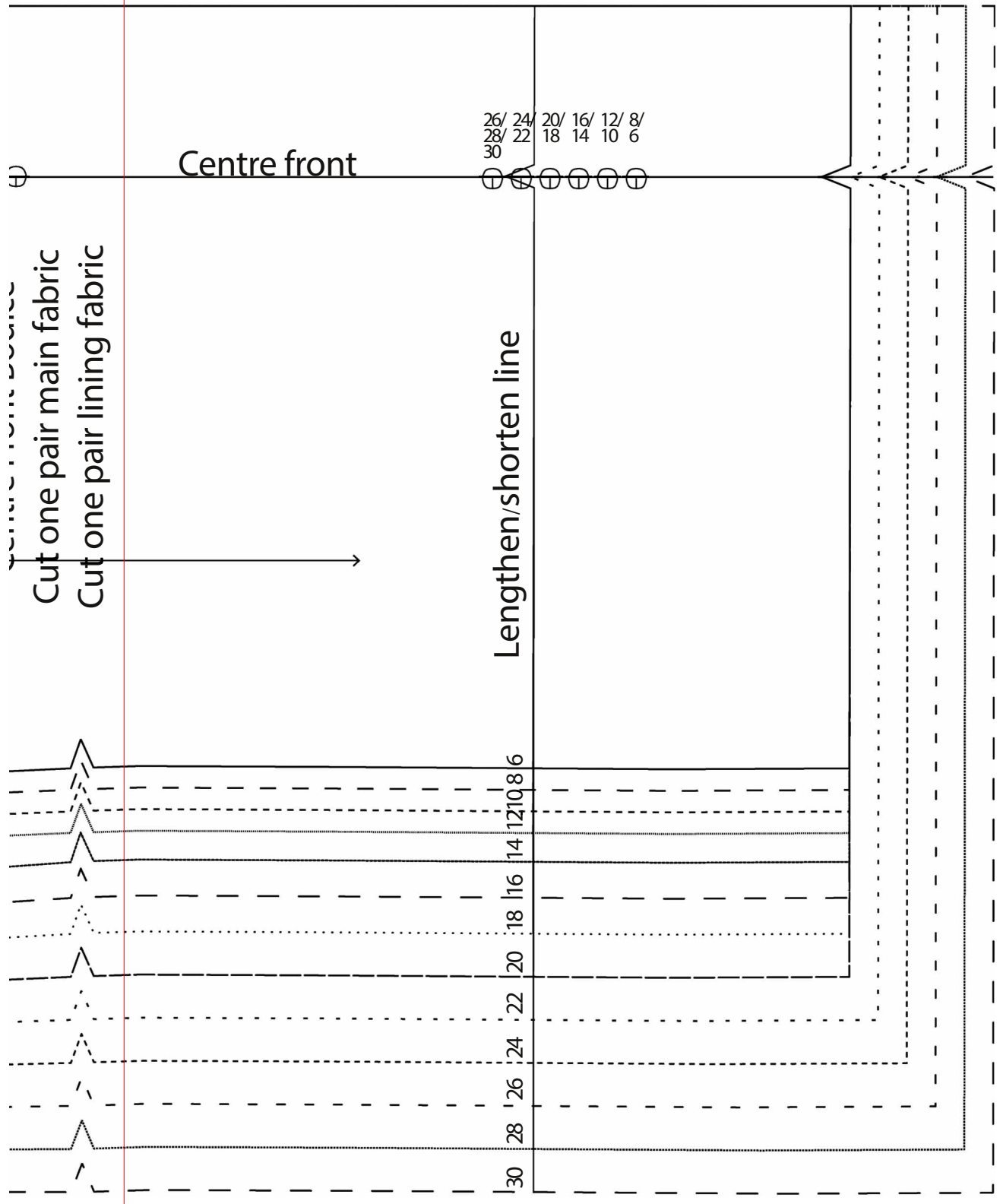
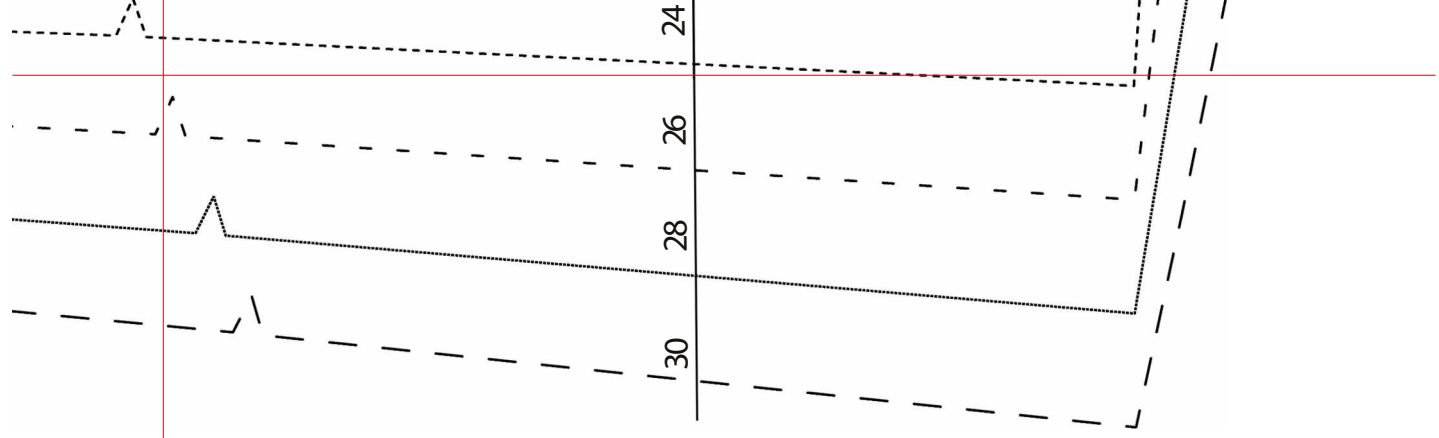


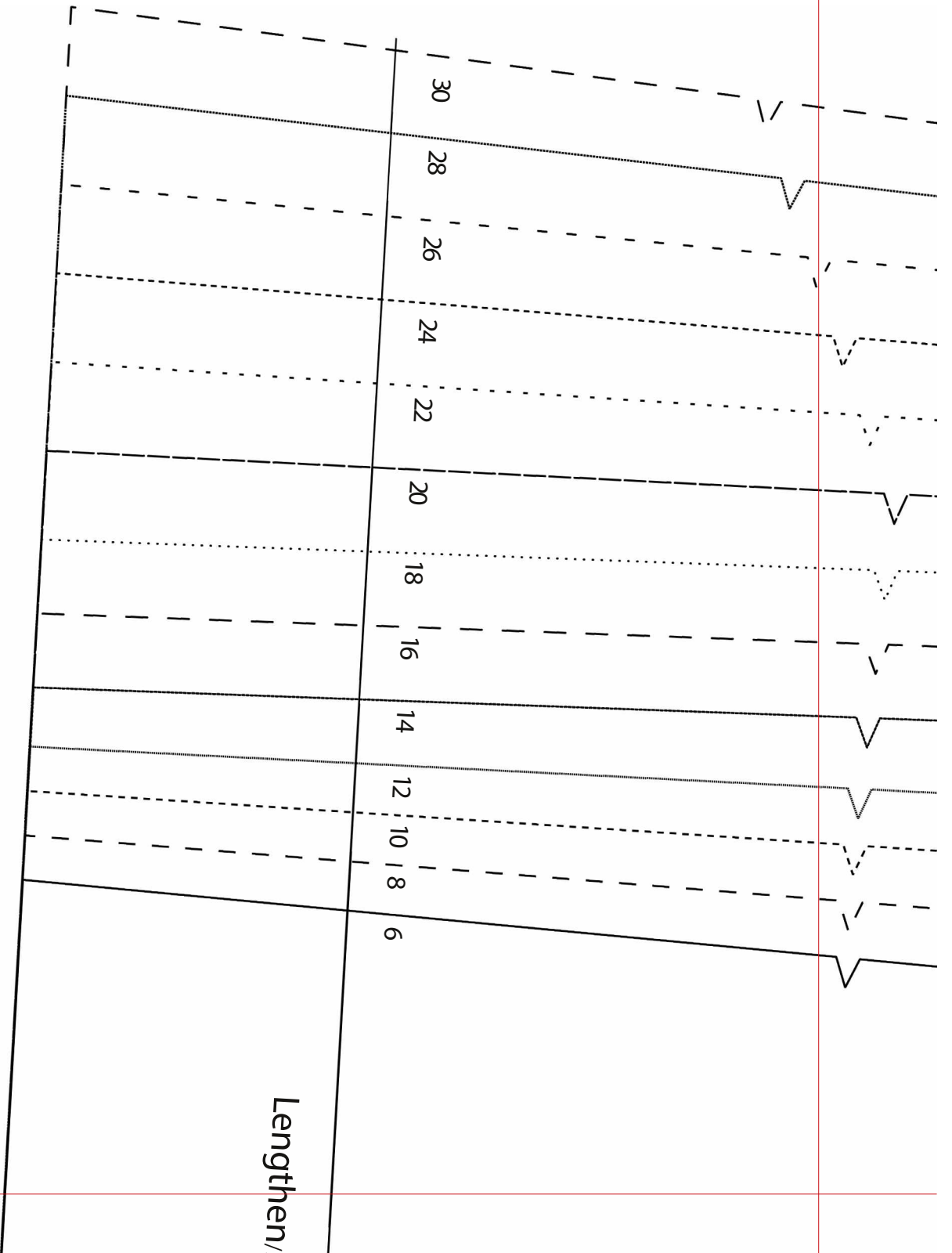
Cent

A THE NAOMI DRESS

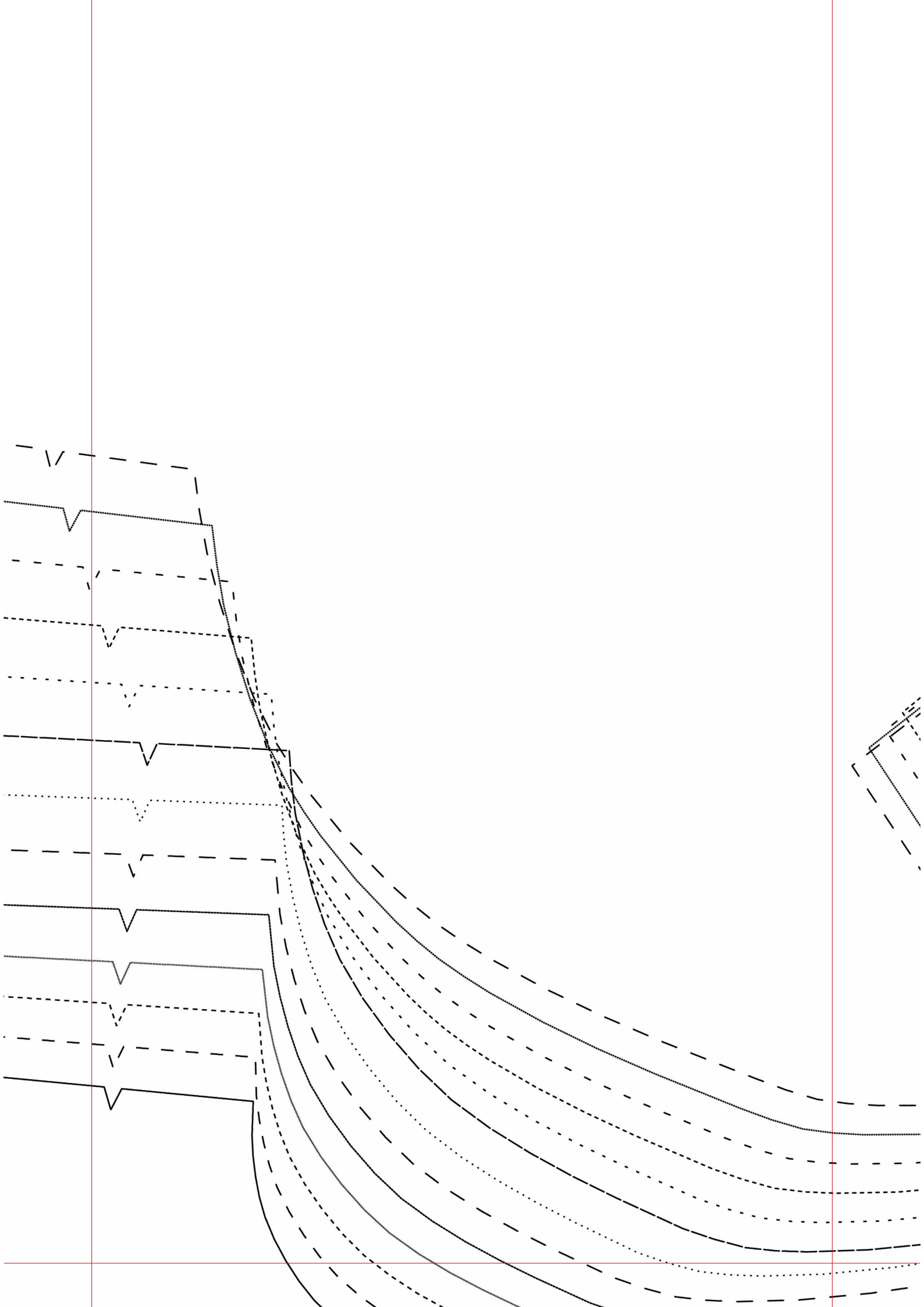
- Centre Front Bodice
- Cut one pair main fabric
- Cut one pair lining fabric

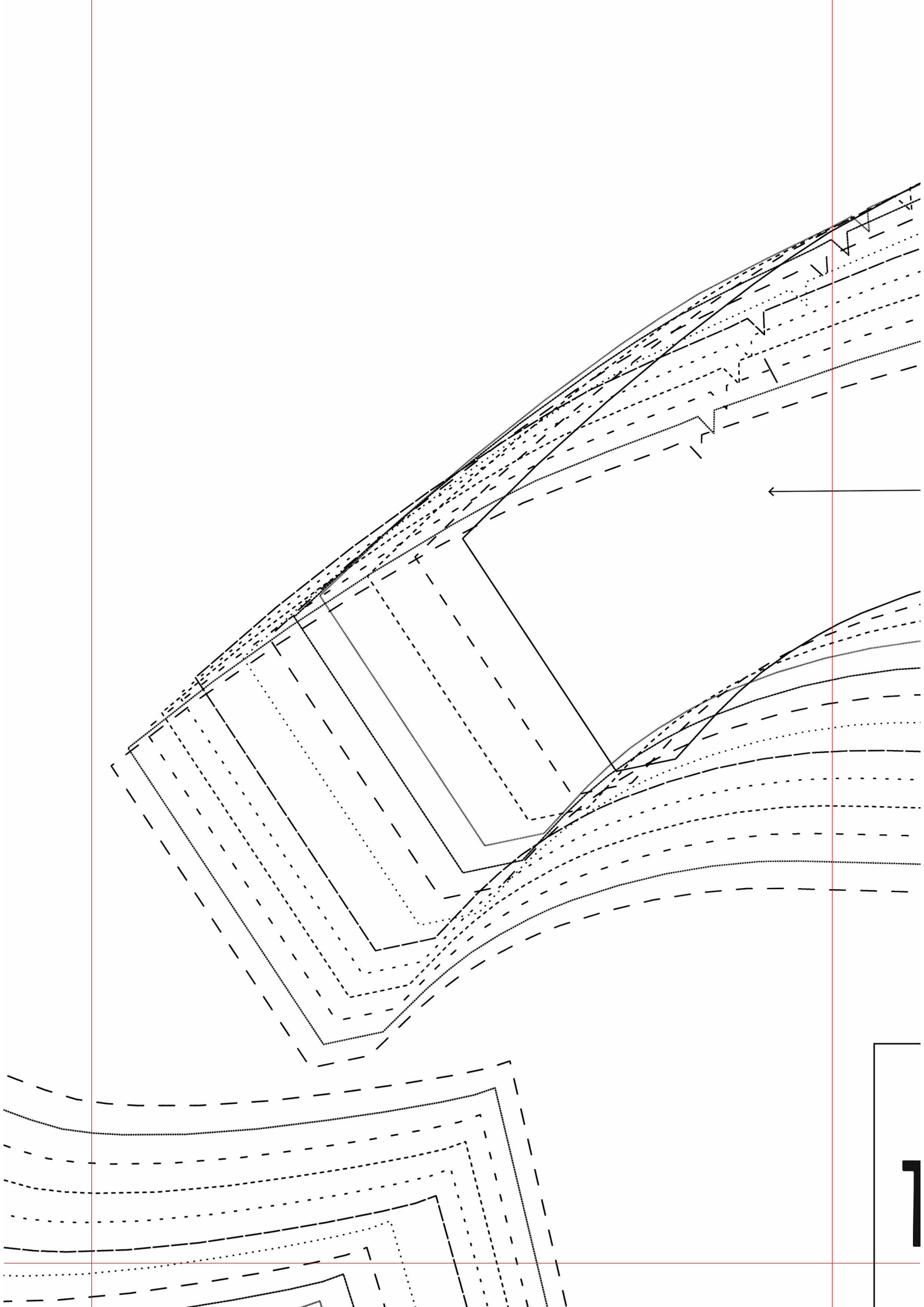


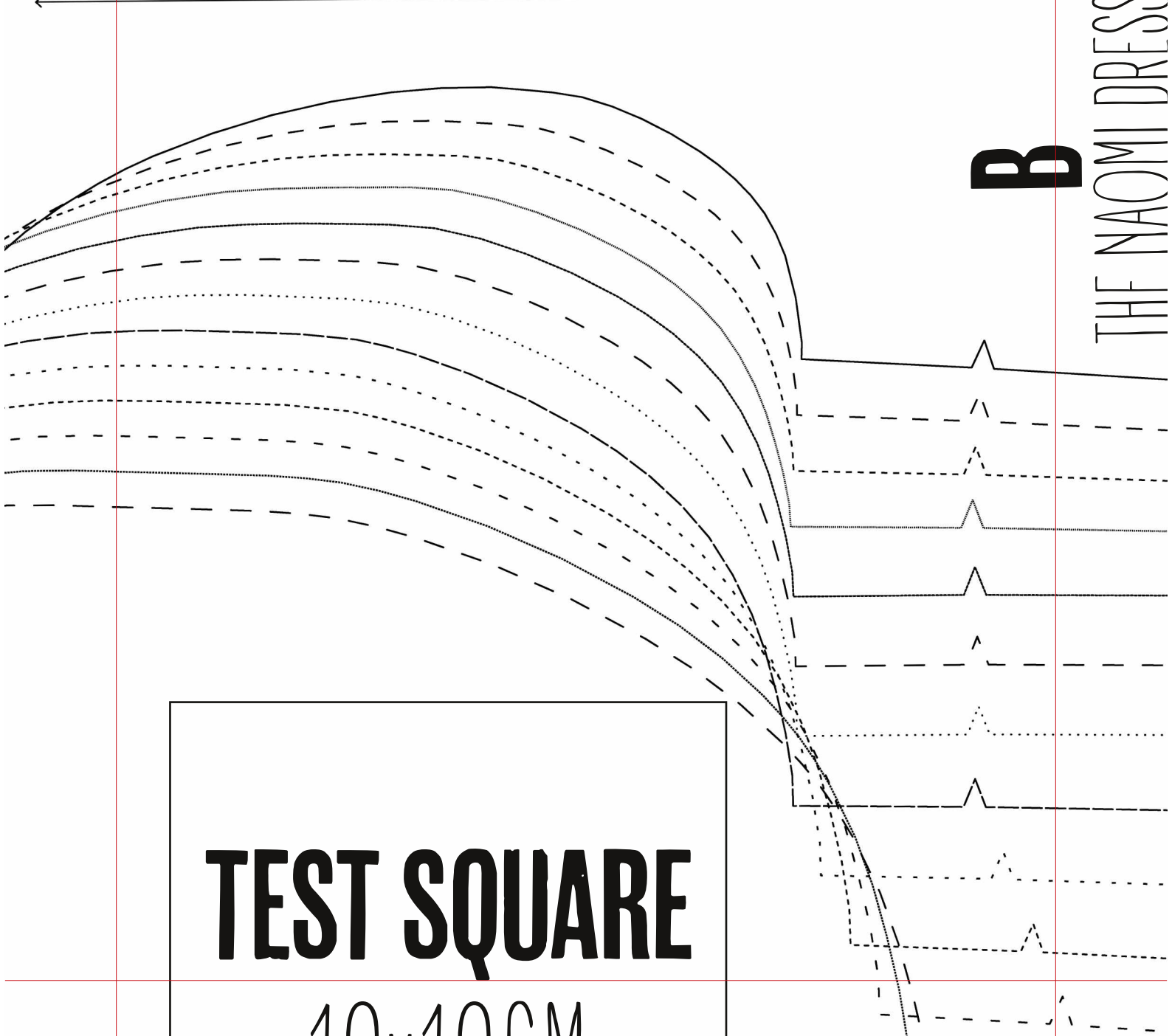
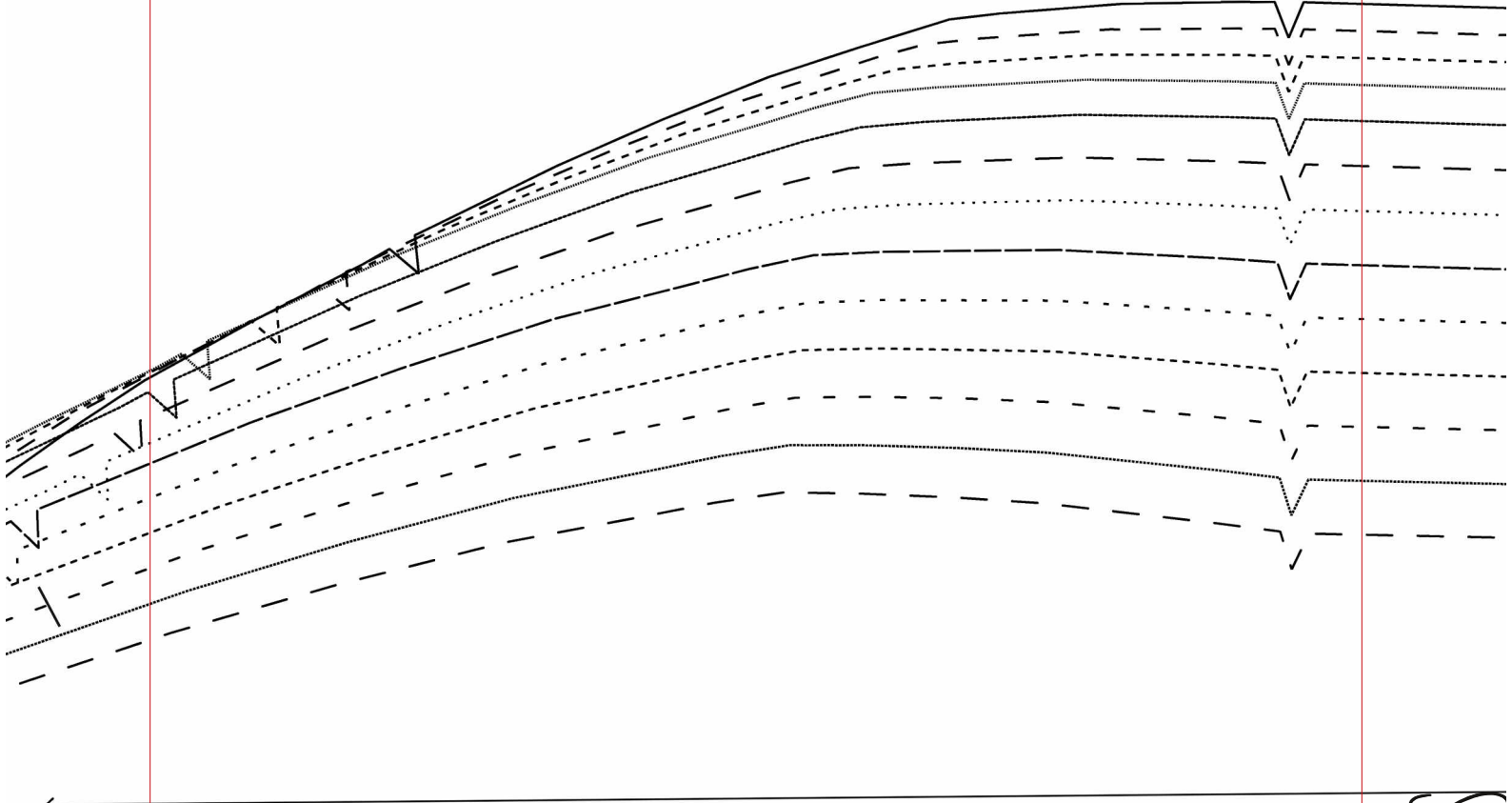




Lengthen/







TEST SQUARE
10x10CM

B
THE NAOMI DRESS

B

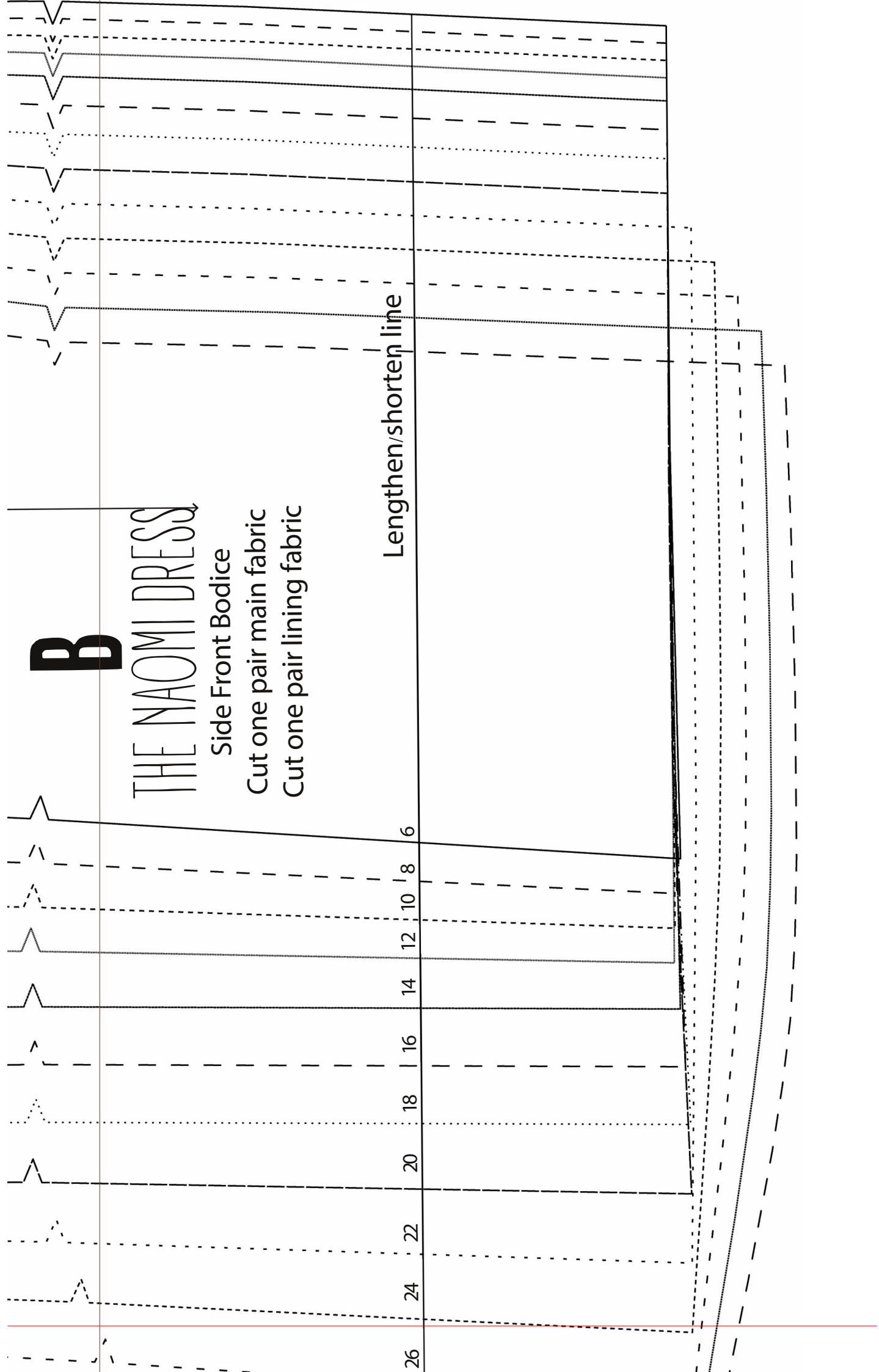
THE NAOMI DRESS

Side Front Bodice

Cut one pair main fabric

Cut one pair lining fabric

Lengthen/shorten line



© Printed in the UK for *Simply Sewing* magazine. Supplied by Our Media Ltd, Bristol, BS1 4ST. For individual, private home use only. Not for commercial or manufacturing purposes or resale.

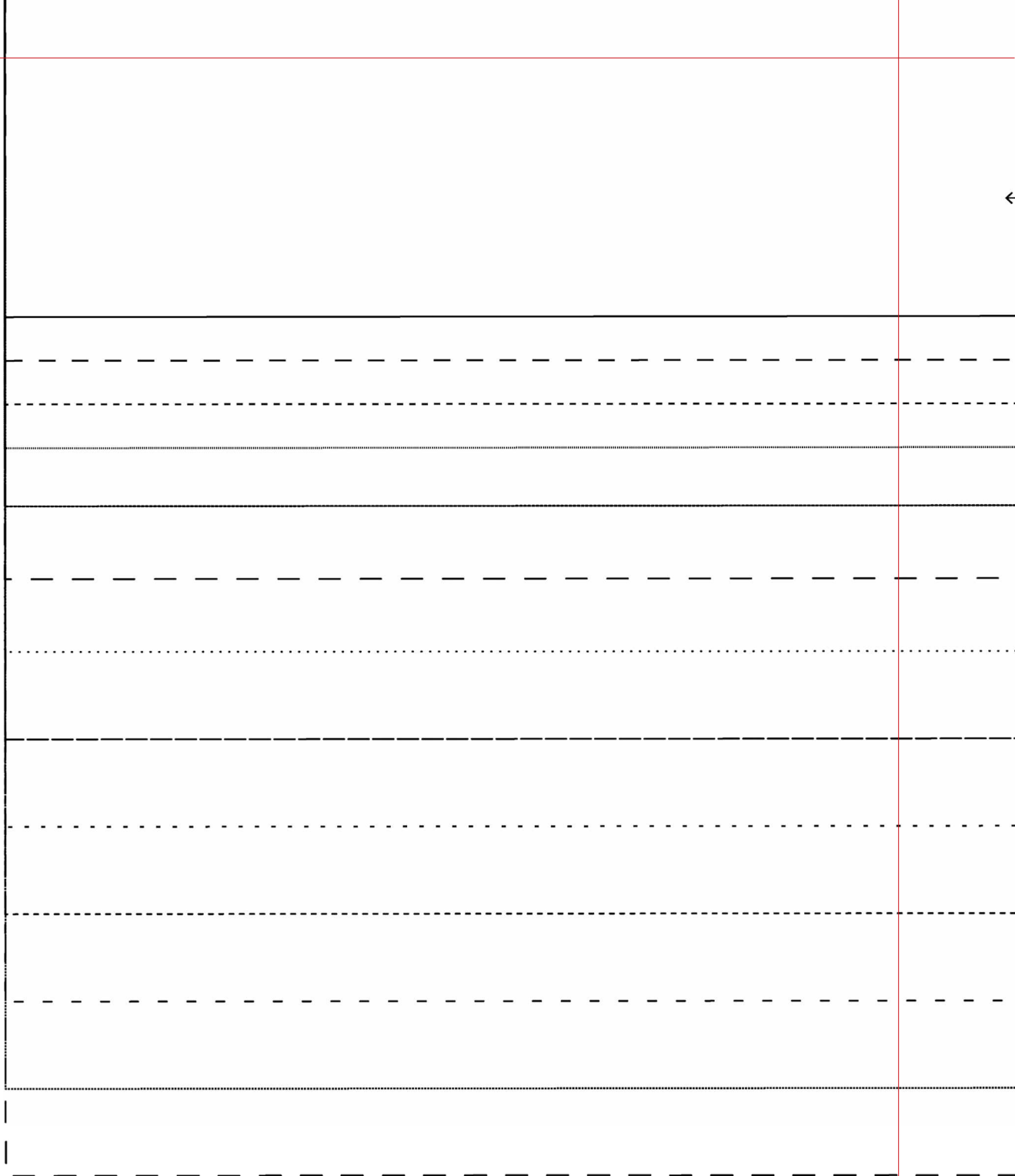
SIDE 2 OF 2

Pattern sheets are printed double sided – you'll need to trace your pattern pieces onto pattern paper rather than cutting out directly from this sheet. Find our guide to pattern tracing at gathered.how/tracing-patterns. Scan the QR code to head to that page.



SIZE KEY

- 6
- 8
- 10
- 12
- 14
- 16
- 18
- 20
- 22
- 24
- 26
- 28
- 30



- 20
- · · 22
- - - 24
- - - 26
- · · · · 28
- - - 30



6



8



10



12



14



16



18



20



22



24



26

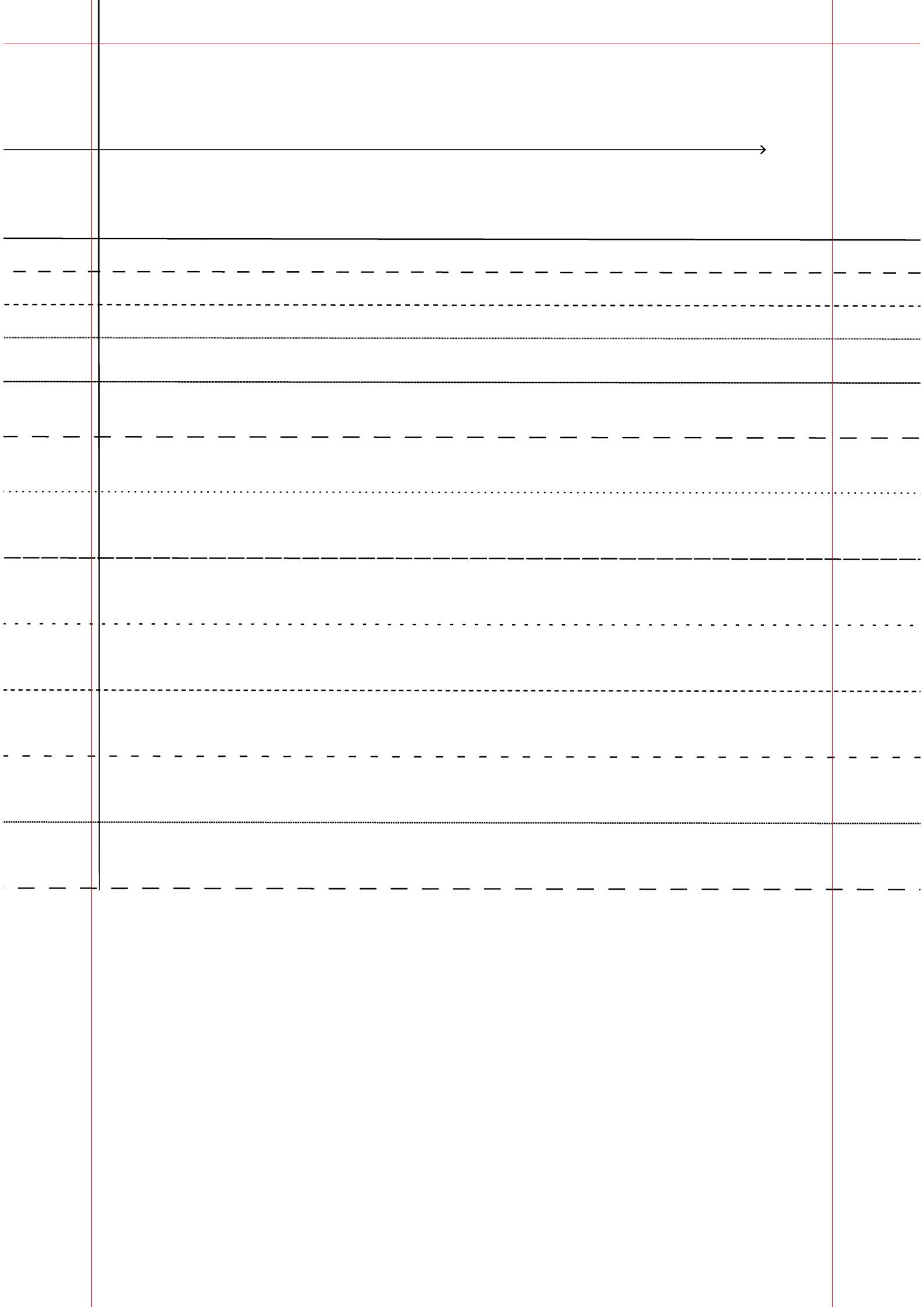


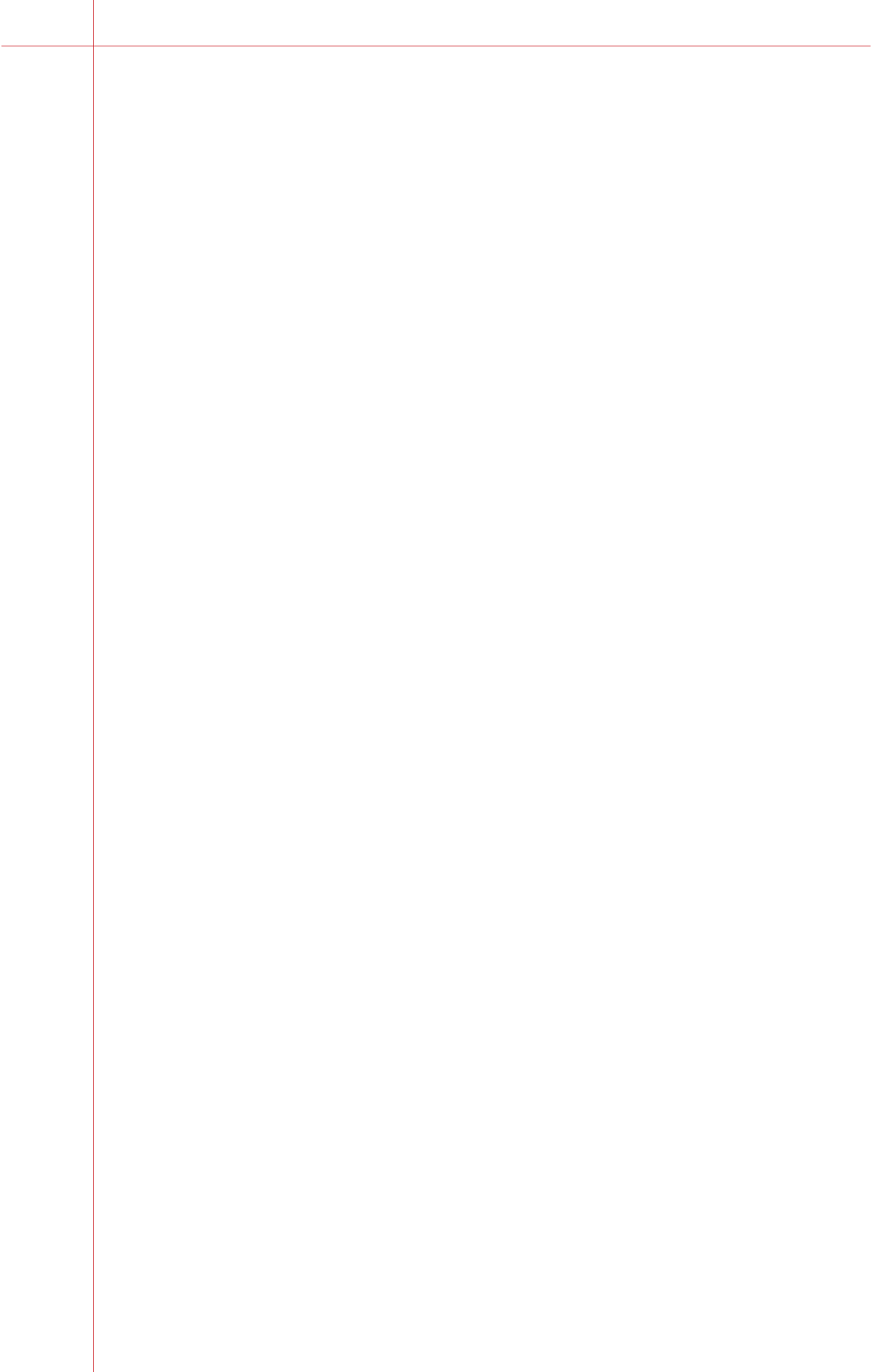
28



30







Gather between arrowheads

E

THE NAOMI DRESS

Front/Back Skirt

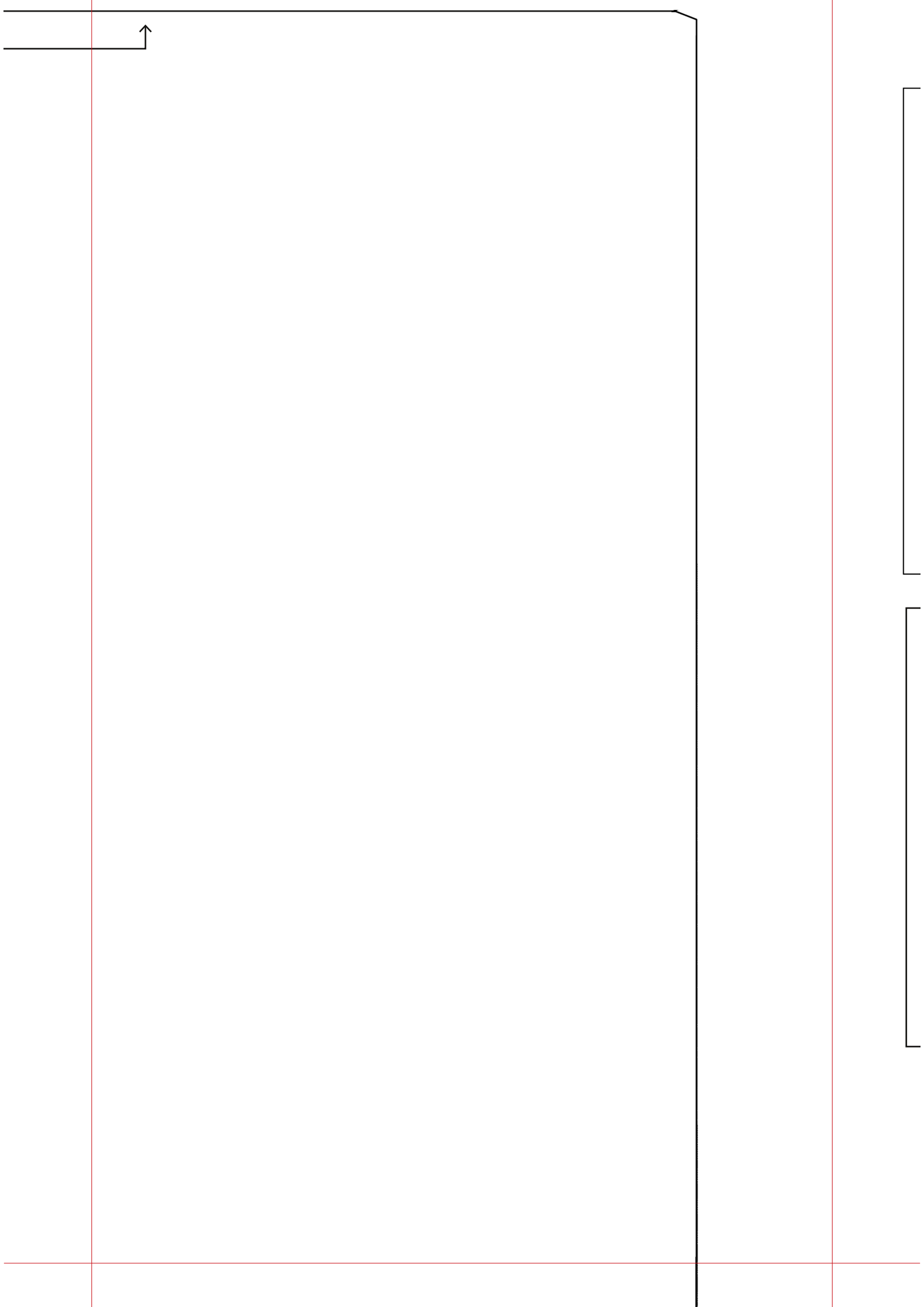
Cut two on fold







Cut on fold



C
← | →
THE NAOMI DRESS
Shoulder Tab
Cut one pair

TEST SQUARE

10x10CM

