

THE SLOUCH BAG

LEARN
BAG-MAKING
SKILLS
✂️

Magnetic closure

Fully lined

THE SLOUCH BAG

Sew the perfect faux suede shoulder bag for a practical and spacious option for everyday use

PACK INCLUDES

- Pattern sheet x1 (tracing required)
- Instruction sheet

YOU WILL NEED

- 1m of 140cm wide main fabric
- 1m of 140cm wide lining fabric
- 1m heavy weight interfacing (we used Vlieseline H250)
- 1m lightweight interfacing (we used Vlieseline F220)
- Magnetic bag fastener
- Matching thread
- Basic sewing kit

NOTES

- Seam allowance is 1cm, unless otherwise indicated.

SUGGESTED FABRICS

- Medium to heavy weight woven fabrics such as faux suede, faux leather, canvas or corduroy.

MATERIAL USED

- Main fabric: Minerva Core Range Double Sided Suede Stretch Knit Fabric in teal, minerva.com
- Lining fabric: Dashwood Studio Tapestry viscose, visit anbo.co.uk for stockists.



Ruth Brown is a writer and designer who creates easy-to-sew patterns. grinlowstudio.com



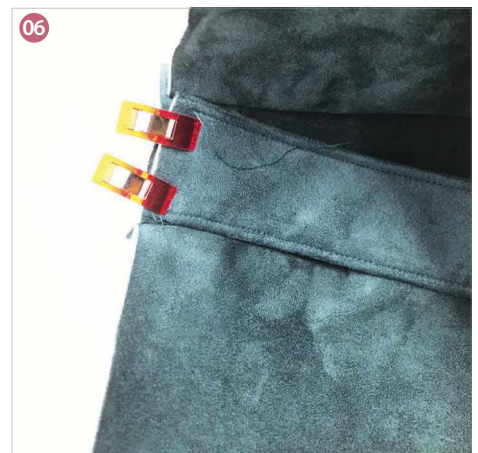
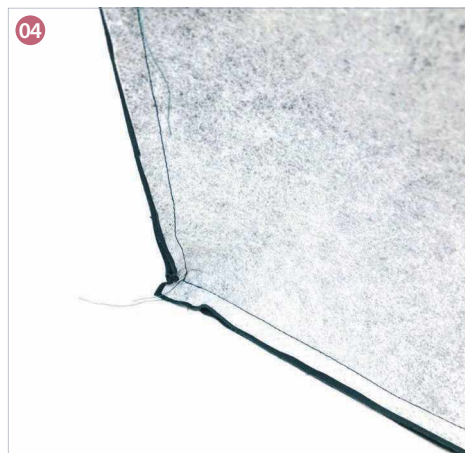
Simply
Sewing
FRESH IDEAS WITH FABRIC

WWW.GATHERED.HOW/SIMPLYSEWING

© Printed in the UK for *Simply Sewing* magazine. Design by Ruth Brown. Supplied by Our Media Company Ltd, Bristol, BS1 4ST. To be used for individual, private home use only. Not for commercial/manufacturing purposes or for resale.



UCH BAG



STITCHING TERMS

RS/WS: Right side/wrong side of the fabric. The right side usually has the print, design or texture and the wrong side is usually plain or duller in appearance.

Machine tack: Use a long stitch length to hold a section in place. Don't backstitch at the start and end.

Finish the seams: Finish the raw edges with a zigzag stitch or an overlocker.

Press: Pressing fabric is placing the iron down, holding it for a few seconds, lifting it and placing it down again. Ironing is the movement of sliding the iron back and forth to remove creases.

Understitch: Stitch close to the seam line usually on the side that will be on the inside of the garment such as the facing. This will hold the seam allowance in place when the garment is worn.

Staystitch: Stitching in areas prone to stretching, such as necklines, to hold the fabric in shape while it is being worked on.

Topstitch: Stitching usually from the right side of the garment to hold seam allowances in place or can be used for decorative purposes.

NOTES

Seam allowance: 1cm

MAKING THE BAG

CUTTING OUT

Step one From main fabric, cut:

Body (A): two

Side (B): two

Base (C): one

Strap (D): one on fold

Step two From lining fabric, cut:

Body (A): two

Side (B): two

Base (C): one

Step three From heavyweight interfacing, cut:

Body (A): two

Side (B): two

Base (C): one

Step four From lightweight interfacing, cut:

Body (A): two

Side (B): two

Base (C): one

Strap (D): one on fold

Step five Apply the lightweight interfacing pieces to the corresponding lining fabric pieces.

Step six Apply the heavyweight interfacing pieces to the corresponding main fabric pieces.

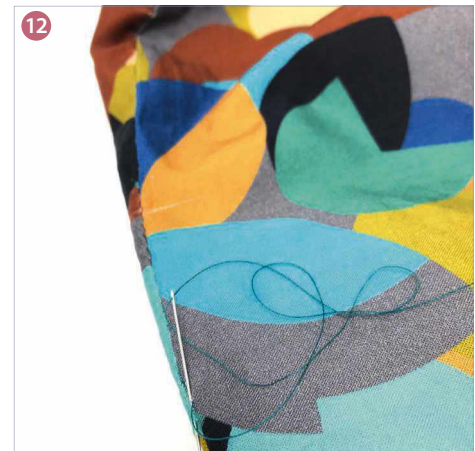
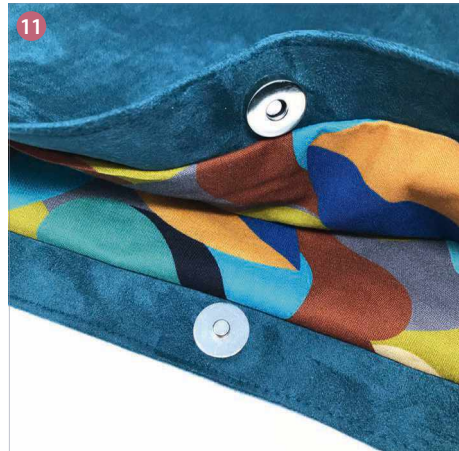
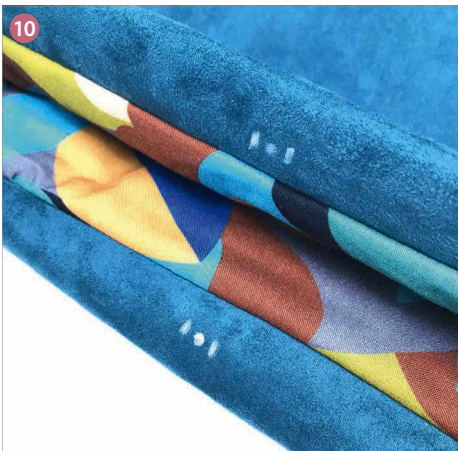
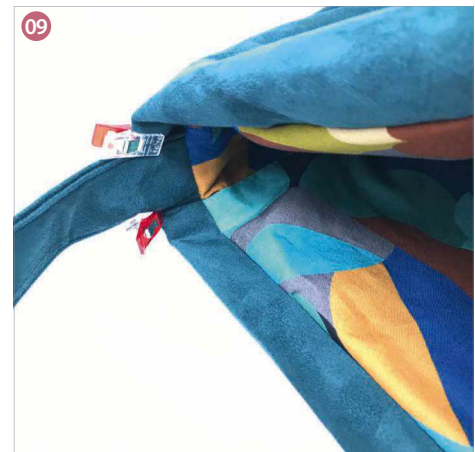
MAKING THE STRAP

Step one Fold Strap in half lengthways with right sides (RS) together. Fold again so raw long edges meet at the centre fold. Fold over again so that the raw long edges are enclosed within the strap. Topstitch along each long side of the Strap, approx 0.3cm from the edge. ⁰¹

MAKING THE BAG

Step one Pin/clip the main fabric Body to Sides with RS together and stitch. ⁰²

Step two Pin/clip Base to bottom of bag on two opposite sides. Stitch each side, leaving the first 1cm and last 1cm free. Backstitch to start and finish. ⁰³



Step three Pin/clip the remaining opposite sides and stitch up to the previous stitching, leaving the last 1cm unstitched. Backstitch to start and finish. ⁰⁴

Step four Repeat steps one to three for the lining, leaving an 8cm turning gap in one long edge of the base seam for turning the bag RS out later. ⁰⁵

ADDING THE STRAP AND LINING

Step one Turn the main bag inside out. Pin/clip one short end of the strap to one side, aligning the side seams with the long edges of the strap. Tuck the strap inside the bag and, ensuring it is not twisted, line up the other short end of the strap with the bag's opposite side seam and pin/clip in place. ⁰⁶

Step two With the lining RS out, tuck it inside the main bag and pin/clip the upper edges RS together, with the strap sandwiched in-between the two. Stitch all the way round the upper seam, reinforcing stitching over strap. ⁰⁷

Step three Carefully turn the bag RS out, pulling it through the turning gap created in the lining base seam. ⁰⁸

Step four Poke out the corners and push the lining fabric all the way down to the base of the main fabric body, until the main fabric self-facing has been pulled inside the upper edge of the bag. Ensure the self-facing is 2.5cm all the way around. Press. Pull straps upwards and clip in place. ⁰⁹

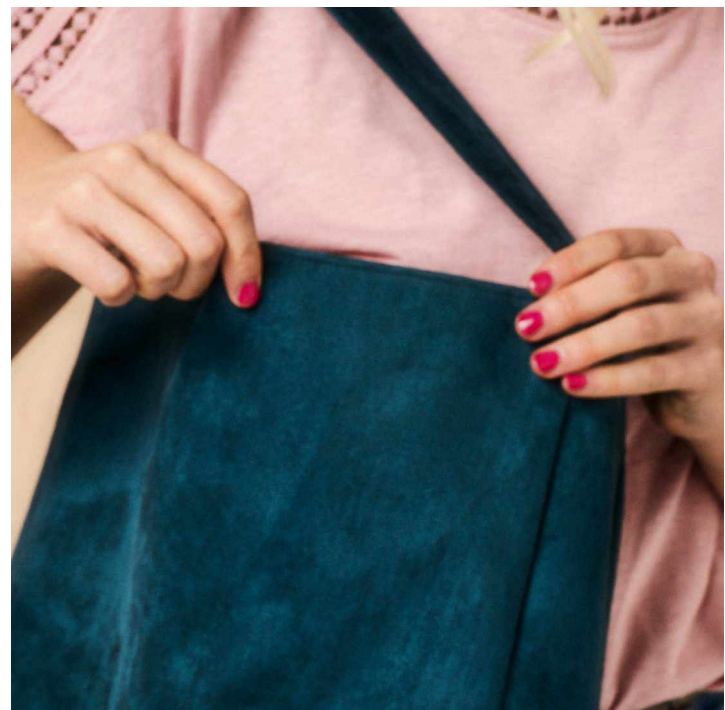
FINISHING OFF

Step one Mark the magnetic fastener placement at the centre of the self-facings as indicated on the pattern piece. ¹⁰

Step two Fit the fasteners as directed by the manufacturer. Reach up through the turning gap to secure the backs of the fasteners. ¹¹

Step three Topstitch all the way around the upper edge of the bag 0.3cm away from the edge.

Step four Slip stitch the turning gap closed to finish. ¹²



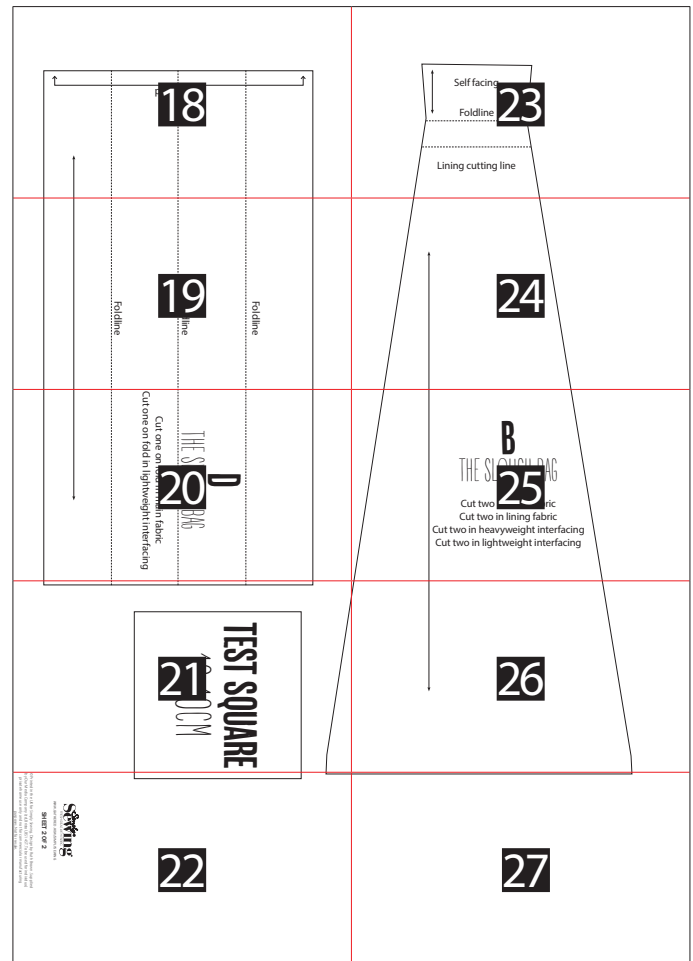
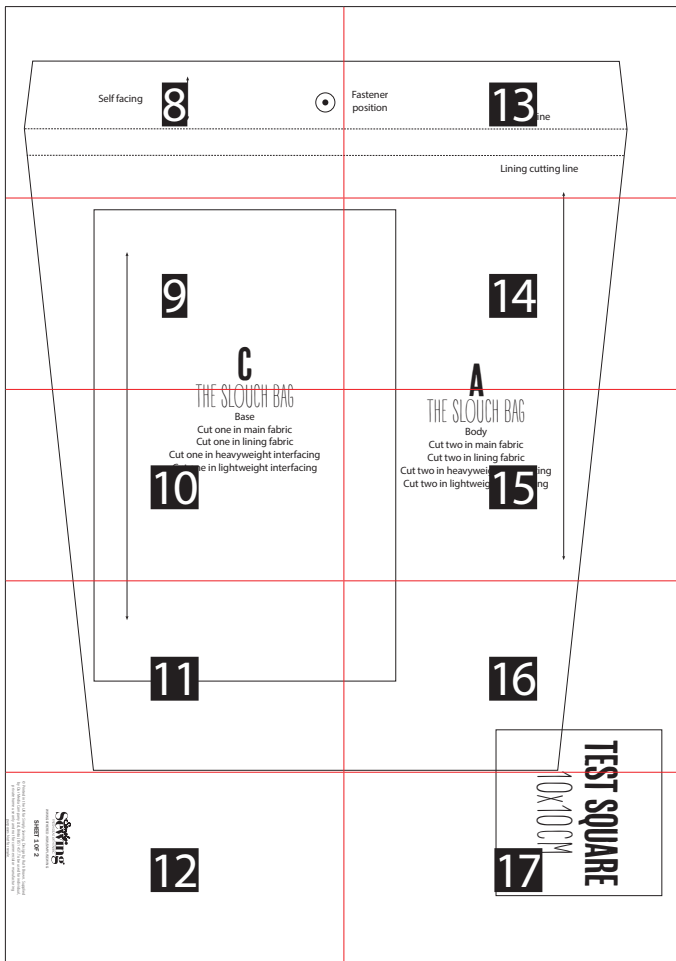
Simply
Sewing
FRESH IDEAS WITH FABRIC
WWW.GATHERED.HOW/SIMPLYSEWING

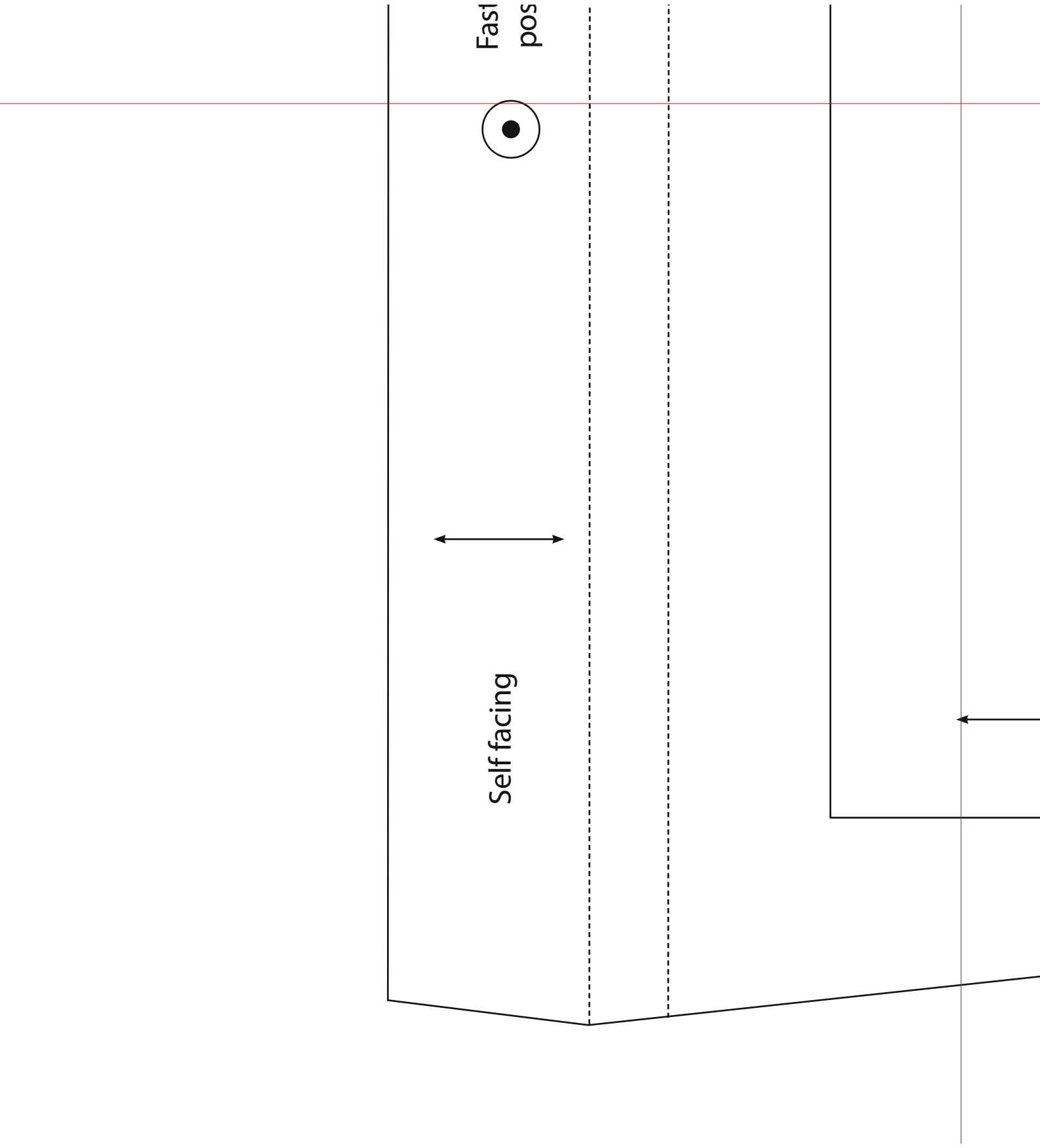
© Printed in the UK for *Simply Sewing*. Design by Ruth Brown. Supplied by Our Media Ltd, Bristol, BS1 4ST. For individual, private home use only. Not for commercial or manufacturing purposes or resale.



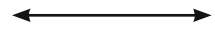
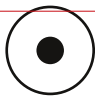
HOW TO PRINT THIS PATTERN

Print out the following pages on A4 paper at 100%.
Overlap the red lines and tape the sheets in place using the guide below.





Fast
pos



Self facing

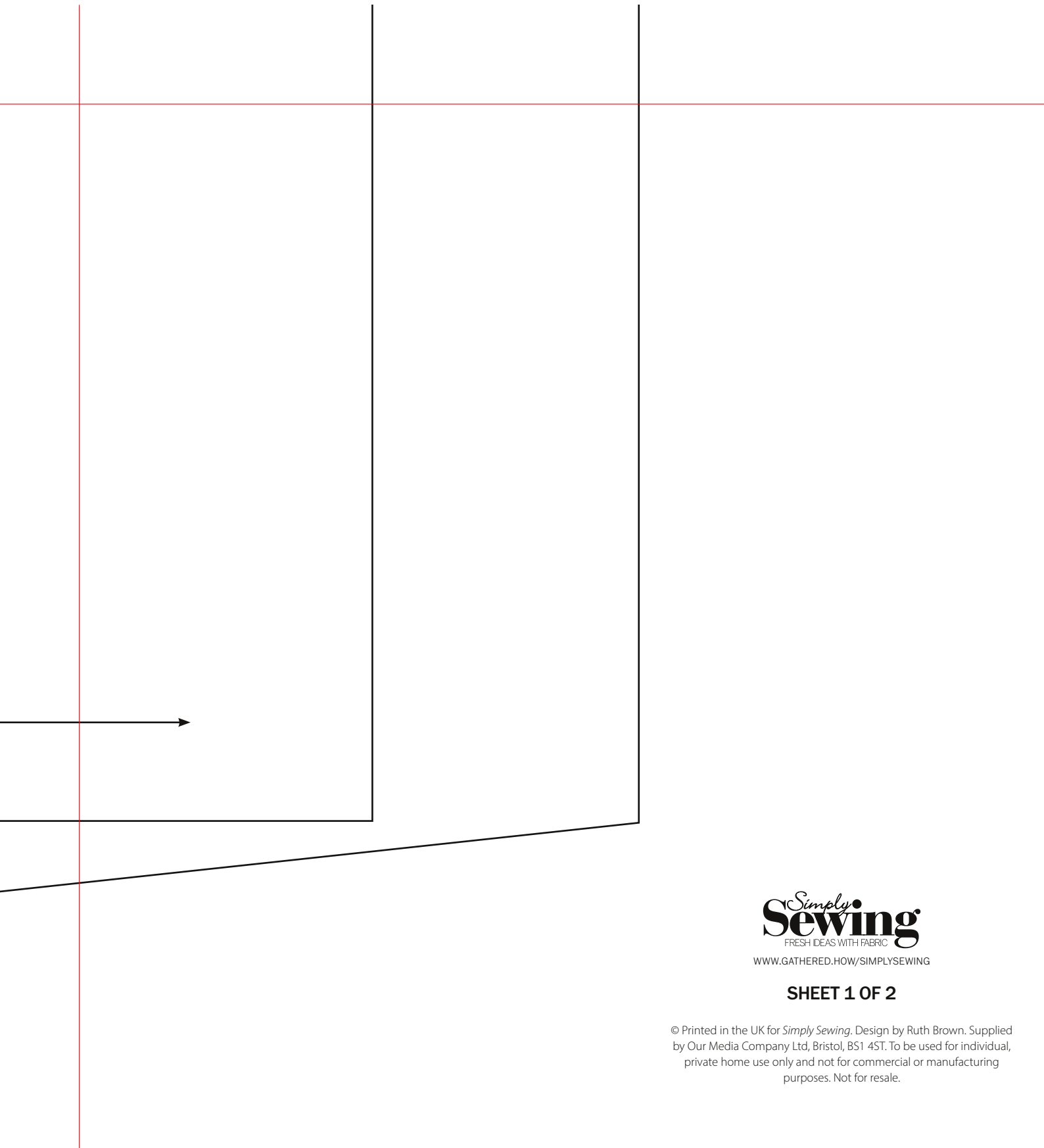


C

THE SLOUCH BAG

Base

- Cut one in main fabric
- Cut one in lining fabric
- Cut one in heavyweight interfacing
- Cut one in lightweight interfacing



Simply
Sewing
FRESH IDEAS WITH FABRIC
WWW.GATHERED.HOW/SIMPLYSEWING

SHEET 1 OF 2

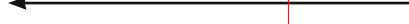
© Printed in the UK for *Simply Sewing*. Design by Ruth Brown. Supplied by Our Media Company Ltd, Bristol, BS1 4ST. To be used for individual, private home use only and not for commercial or manufacturing purposes. Not for resale.

Fastener
position



Foldline

Lining cutting line



A

THE SLOUCH BAG

Body

Cut two in main fabric

Cut two in lining fabric

Cut two in heavyweight interfacing

Cut two in lightweight interfacing

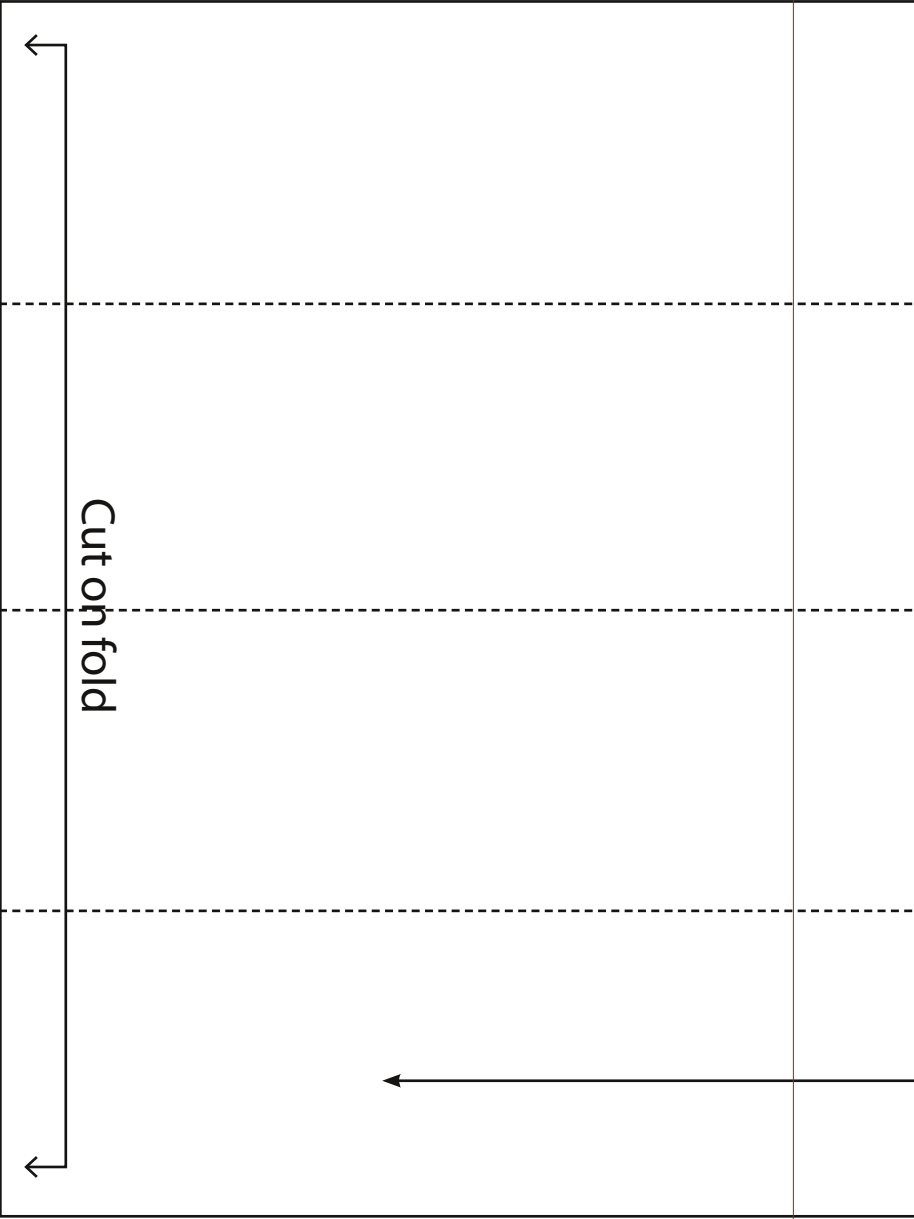
icing
cing



TEST SQUARE

The image shows a technical drawing of a test square. A black-outlined square is positioned in the upper right. Inside it, the text 'TEST SQUARE' is written in a bold, black, sans-serif font, and '10x10CM' is written in a black, monospace font below it. A thin black line with an arrowhead at its left end points from the text to the square. A vertical red line is on the left, and a horizontal red line is at the bottom. A black-outlined rectangle is at the bottom left, with its top-right corner at the intersection of the red lines. A vertical black line extends from the bottom-right corner of the square down to the horizontal red line.

10x10CM



Foldline

Foldline

Foldline

D

THE SLOUCH BAG

Strap

Cut one on fold in main fabric
Cut one on fold in lightweight interfacing



TEST SQUARE

10x10CM

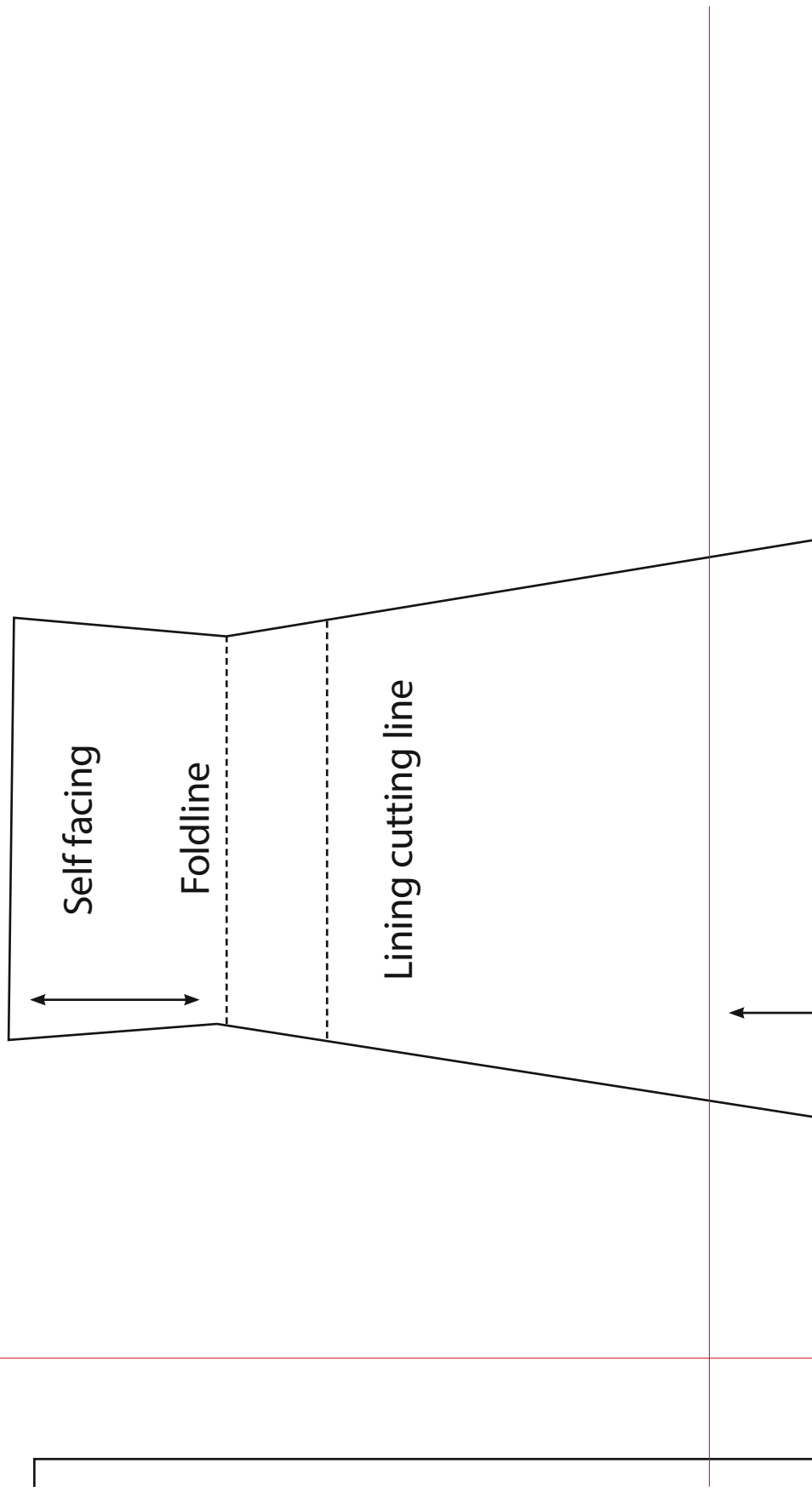
cing

Simply
Sewing
FRESH IDEAS WITH FABRIC

WWW.GATHERED.HOW/SIMPLYSEWING

SHEET 2 OF 2

© Printed in the UK for *Simply Sewing*. Design by Ruth Brown. Supplied by Our Media Company Ltd, Bristol, BS1 4ST. To be used for individual, private home use only and not for commercial or manufacturing purposes. Not for resale.





B

THE SLOUCH BAG

Side

- Cut two in main fabric
- Cut two in lining fabric
- Cut two in heavyweight interfacing
- Cut two in lightweight interfacing

